

East Helena and Townsend Honor Their Veterans

Hundreds Attend East Helena Veterans' Day Celebration



Children and parents listen during the Veterans' Day Ceremony at Main Street Park. Nancy Marks, MT43 News Photographer

Nancy Marks
MT43 News Reporter

Veterans' Day in East Helena is a day of celebration and remembrance. East Helena residents take the remembrance day very seriously.

As the parade came down the street, promptly at 11 a.m., everyone removed hats while hands went over hearts as the flags moved down the street. First responders marched behind the Sheriff and Colonel of the Montana Army National Guard, Chad Roudebush. School kids, released early from school, waited patiently for candy from folks who rode the many floats.

During the ceremony in Main Street Park, Roudebush,



as keynote speaker, pointed out that service is the highest calling a person can have to a higher cause. He related that two of his uncles died in World War II in the Pacific front.

Many organizations participated in the parade and ceremony, including Sons and Daughters of the American Revolution, Ancient Order of Hibernians. They were led by

Hundreds **Attend** , 2

Veterans Day Event Was at American Legion Post 42



Chaplain Holly Hendrickson
Photo Credit: Matt Nelson

Matt Nelson

Since Veterans' Day is a national holiday on November 11th, American Legion Post 42 Commander Linda Cousineau officially opened the ceremony at 11:11 AM this day. Several members were in attendance, and it was also open to the public. After Linda spoke, Chaplain Holly Hendrickson said a prayer for vets and their families, thanking God for His blessing and protection, and honoring all those veterans who have made the ultimate sacrifice.

Peggy Long, the ladies Auxiliary President spoke next, followed by the First Officer, Jennifer Dalrymple, who is a lady that has about 25 years of military



Michael Gustafson
Photo Credit: Matt Nelson



service. The Second Officer is Michael Gustafson, and Tony Wagner was the guest speaker. Currently, he is the American Legion District Commander, and in the past served as the American Legion Commander.

Each speaker spoke of the bravery of all veterans, whether they served in combat or not. As it has been mentioned often, when women and men sign on

Veteran's **Day** , 2

~*~ EARLY HOLIDAY EDITION DEADLINE NOTICE FOR MT43 NEWS CONTRIBUTORS ~*~

REMINDER
REMINDER
REMINDER

Ad Date & Time | Article Date & Time | Print Date

Fri. 11.14.25 @ 2PM | Mon. 11.17.25 @ 12PM | Fri. 11.21.25 | Thanksgiving Edition

Mon. 11.17.25@ 2PM | Mon. 11.24.25 @ 12PM | Fri. 11.28.25 | E Helena Christmas Stroll Edition

Mon. 11.17.25@ 2PM | Mon. 12.1.25 @ 12PM | Fri. 12.05.25 | Townsend Christmas Stroll Edition

Fri. 12.12.25 @ 2PM | Tue. 12.16.25 @ 12PM | Fri. 12/19/25 | Christmas Edition

Fri. 12.19.25 @ 2PM | Mon. 12.22.25 @ 12PM | Fri. 1.2.26 | New Year Edition

Lady Bulldogs Volleyball Team Goes to State

Bryleigh Erickson
BHS Sports Reporter

On Thursday and Friday, November 6th and 7th, the Lady Bulldogs volleyball team travelled to Butte to play in the Southern B Divisional tournament.

The Bulldogs went into the tournament as the number one seed from District 5B.

For the very first game of the tournament, the Bulldogs faced the Colstrip Fillies. The Bulldogs won the game in three sets, 25-26, 25-18, and 25-22. Harper Wolfgram, Bryleigh Erickson, and Kaitlyn Noyes each had 4 blocks against the Fillies. Kaitlyn Noyes had 15 kills, and Aspen Slyker had 9 kills. The Bulldogs advanced to the next round.

The Bulldogs ended the day playing against a tough Shepard team. They lost in a brutal match, 18-25, 7-25, 23-25. Harper Wolfgram led the team in blocks with

Holly Newman
Kelly Morris Photography

7, and Sophia Lamb had 6. Kaitlyn Noyes had 8 kills, and Holly Newman had 4.

On Friday, the Bulldogs guaranteed themselves a spot at state by winning over the Columbus team. The Bulldogs won the match, 28-26, 25-20, and 29-27. In this match, Harper Wolfgram had 6 blocks, and Kaitlyn Noyes and Bryleigh Erickson had 4. Kaitlyn had 16 kills with Holly Newman scoring 8.

The Bulldogs played the Jefferson Panthers. The winner of this match competed to place, with the loser taking fourth place. The Bulldogs lost in a tough match, 17-25, 18-25, and 15-25. Kaitlyn Noyes led the Bulldogs with 13 kills, and Harper Wolfgram had 7 blocks.

After a long tournament, the Bulldogs are headed to the state tournament with a fourth-place position. The state tournament is slated for November 12th, 13th and 14th. The Lady Bulldogs play at 10 a.m. the first day in Bozeman against Florence.

Editor's Note: See more pics on page 3!

Big Sky Little Pantry Open to Everyone

Brenda Phillips

Big Sky, Little Pantry Broadwater County, was started in April as a project that came out of a nine-month Big Sky, Big Leadership course offered through the Broadwater County Extension Office. Class members Kasee Clark, Brittany DesChene, and Katie Erb were tasked to develop an impactful community service project. Their goal was to establish a 24/7 resource for food assistance, while allowing users anonymity. The Little Pantry is free for

Big Sky, Little Pantry in the alley behind the Fire Department at 13 S Cedar St, Townsend
Photo Provided by Big Sky, Little Pantry Members

Big Sky, Little Food, 2

MT 43 NEWS, INC.
408 BROADWAY STREET STE A
TOWNSEND, MT 59644-2323

Hundreds Attend , 1



Colonel of the Montana Army National Guard Chad Roudebush, the keynote speaker, recalled two of his uncles died in action in the Pacific during World War II.
Nancy Marks, MT43 News Photographer

East Helena’s American Legion Post 10010, whose commander, Tim Graff, headed the ceremony. An East Helena lady, Charmaine Lyngard, sang the Star-Spangled Banner and led the Pledge of Allegiance.

Bill Casey, East Helena born and raised, said he also had two relatives in World War II. He related that his father, William E. Casey, was one of the founding



Bill Casey views the names of his uncles who served in WWII. The new monuments hold hundreds of East Helena and surrounding area names of those who served.
Nancy Marks, MT43 News Photographer

fathers of the VFW organization in East Helena. As he looked for his relatives’ names on the new monuments installed at the Main Street Veterans’ memorial, he pointed out the update: “The veterans’ organizations and local families here came together to build this new memorial. They added many new names. The ceremony gives people the chance to gather and remember their brothers and sisters who served.”



Drum and Bag Pipe Corps of the Back Devils of First Special Services Regiment, whose members from Canada and Montana served in World War II on the European Front.
Nancy Marks, MT43 News Photographer



Sons and Daughters of the American Revolution float depicting George Washington and his troops.
Nancy Marks, MT43 News Photographer

Big Sky, Little Food, 1



Big Sky, Little Pantry members Brittany DesChene, Kasee Clark, and Katie Erb
Photo Provided by Big Sky, Little Pantry Members

all community members to take what they need and leave what they can.

The organizers are grateful for the community support for this project. The pantry cabinet was donated by Birdi Kribs with The Bird’s Nest. Townsend Hardware donated paint and Ace Farm and Ranch donated insulator board to weatherize the cabinet for use as a pantry. The Broadwater Rural Fire District has provided a central location in the alley behind the fire station at 130 S. Cedar.

The Little Pantry is available 24/7 for anyone in the community who may need non-perishable food items. Anyone needing a little extra help with groceries can take the opportunity to check out what the pantry has to offer. Organizers especially want kids to know that they can come to this resource for handy kid-friendly meals and snacks. The organizers monitor the site daily for appropriate items and cleanliness. Due to the confidential nature of the pantry, organizers are unsure how many community members have been positively



All community members can “take what they need and leave what they can”
Photo Provided by Big Sky, Little Pantry Members

impacted; however, resources have continuously rotated in and out since its implementation. The pantry has remained sufficiently stocked since April with community donations.

Donors can place items inside the pantry cabinet, neatly, at any time of day. A list of suggested foods is available at the Little Pantry or on the Facebook page.

As the weather gets colder, items may have to be limited to non-perishable (non-freezable) dry goods such as pasta, rice, crackers, granola bars, ramen noodles, mac and cheese, hygiene items, toilet tissue, etc. It is not meant to be a total shopping resource, but to help with the in-between times.

The Big Sky, Little Pantry is a self-sustaining community effort, separate from the Broadwater Food Pantry. The Broadwater Food Pantry members commend the effort to provide support for our neighbors in these challenging times.

For more information, follow Big Sky, Little Pantry Broadwater County on Facebook.

Veteran’s Day , 1

the dotted line to serve their country, essentially, they are writing a blank check to the USA; that they are knowingly willing to sacrifice their lives if necessary. Courage was often mentioned, as well as duty, dedication, and how critical their role is for the defense of our great country.

The Auxiliary Chaplain Peggy Long closed out with a prayer, “May the bravery and sacrifice of all veterans inspire us to pursue peace and remember the true cost of freedom. Amen.”



Commander Linda Cousineau gives Jennifer Dalrymple a 15-year service award
Photo Credit: Matt Nelson



Commander Linda Cousineau giving Virgil Henke a 35-year service pin
Photo Credit: Matt Nelson

Then, Michael Gustafson listed service awards to members of the Legion, based upon their years of membership. Thirteen names were called out for people who had served in five-year increments. U. S. Air Force veteran Jennifer Dalrymple has been a member for 15 years, and Marine Corps veteran James Spatz has 40 years; he was not present. Army veteran Virgil Henke has been a member for 35 years.

Following the ceremony, all people there were given a delicious taco lunch.



Townsend Schools Veterans Day Celebration

On behalf of Townsend Schools, I would like to extend my sincere thanks to the Veterans who joined us for our Veterans Day celebration. It is a humbling experience to share time with our local military members. This ceremony is a way to honor those who served or continue to serve. It is also a fantastic learning opportunity for our students.

As educators, we strive to relate concepts by showing real-life examples. Having Veterans join us is a powerful reminder that the Armed Forces are comprised of people from communities across America – people just like those in Broadwater County: our friends, neighbors, and community members.

Through joining us for our Veterans Day ceremony, our local Veterans are teaching and serving. We truly appreciate all you have done. Thank you for honoring us with your presence.

Sincerely,

Brad Racht

Superintendent, Townsend Schools

RATES ON PAGE 11

STARTING NOVEMBER 1st

New and renewing subscribers will be entered into a drawing on December 5th.

The lucky winner will receive one year subscription free.

The subscription can be used as a gift for someone, or to add another year to your own!

Call or stop by the office Mon - Fri 10am - 2pm : 406-266-0086 | 408 Broadway, Townsend
Or subscribe online at MT43NEWS.COM

Medicare Workshop!

Questions on Medicare?

Attend Rocky's Agency on Aging two-hour workshop to learn all things Medicare.

Medicare 101 & How to Navigate the Plan Finder Online!

November 15, 2 - 4pm
1398 Warehouse Ave
Helena, MT

Questions?
Contact Danielle at 406-457-7349
or by email at dhorton@rmdc.net



Cheer: Autumn Henke
Townsend Booster Club Photo



Volleyball: Holly Newman
Townsend Booster Club Photo

NorthWestern[®]

Energy

Delivering a Bright Future

Sponsor of Townsend School Page

Rotary Announces Holiday Lighting Contest

Townsend Rotary Club



The Rotary Club of Townsend will again offer cash prizes for residential Holiday Lighting displays in the Townsend area.

The first prize winner will get \$100, second place \$50 and third place \$25.

Judging will take place during the weekend of December 6-7. There is no need to enter - just have your displays lit in the evenings that weekend.

Rotarians will drive around the community and select three winners!

Good luck to all, and safe, happy holidays from the Rotary Club of Townsend.



Where Good Enough Just Isn't Good Enough!

406-266-3110

7685 US Hwy 287, Townsend MT

topgunt3110@gmail.com

topgunautobodytownsend.com

Broadwater Food Pantry Update

Brenda Phillips
Food Pantry Rep

In reviewing the number of families served in Broadwater County, the numbers have risen from early July 2025, when 28 families, made up of 63 individuals, were served by Broadwater Food Pantry. On the most recent distribution day, Nov 1st, the Food Pantry served 48 families or 94 individuals, which is our highest to date. We are very aware of the Government issues with SNAP benefits and how it will affect our neighbors. If you are affected by Government SNAP benefits loss, contact Broadwater Food Pantry. We are open 1st and 3rd Saturdays of each month from 9:00 – 10:45 pm at 315 Broadway. For questions, call Daryl 406-980-0800

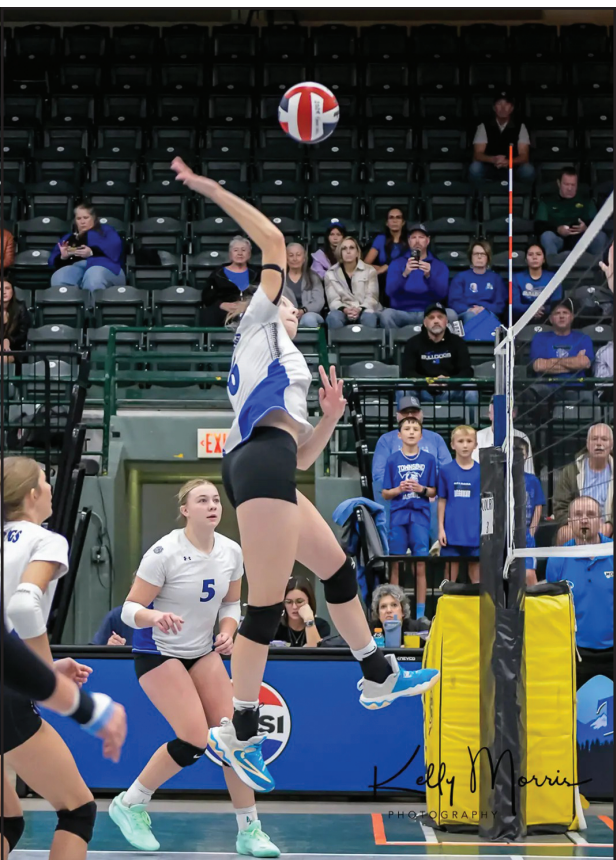
We visited with a lot of the community members at our booth during Fall Fest and are very appreciative of the generous donations. We have received generous donations of burger & pork sausage from ranchers, 4-H Pork from Valley Bank of Helena & Opportunity Bank, chickens from 4-H sale, and venison burger from the White Sulphur Springs food pantry. The

Food Pantry Update, 6

GO LADY BULLDOGS!! Article on Page 1



Emmalin Fischer
Kelly Morris Photography



Harper Wolfgram
Kelly Morris Photography



Jazel Ragen
Kelly Morris Photography



Aspen Slyker
Kelly Morris Photography



Bryleigh Erickson
Kelly Morris Photography



Kaitlyn Noyes
Kelly Morris Photography



Violet Collins
Kelly Morris Photography



Sophie Lamb
Kelly Morris Photography



Tevyn Newman
Kelly Morris Photography

BROADWATER COUNTY
GOVERNMENT CALENDAR

NOVEMBER

Monday 17

- 6:00 pm: Parks and Recreation

Tuesday 18

- 10:00 am: Commission/CAO Working Meeting

Wednesday 19

- 10:00 am: Commission Meeting
- 6:00 pm: Airport Board



BROADWATER
COMMUNITY CALENDAR

NOVEMBER

Now - Nov 15

- American Legion Winter Coat Drive

Now - Nov 30

- Dollar for Dollar Donations with Town Pump for Broadwater Food Pantry **SEE AD ON PAGE 10**

Tue 4 - Tue 11

- Operation Green Light for Veterans
- Friday 14 @ 12:00 pm: Alcoholics Anonymous at Shepherd of the Valley Lutheran Church, 301 N Cherry
- 1:00 pm: Townsend Pinochle Club at Broadwater County Sr. Center, 516 2nd St

Saturday 15

- 2:00 pm: Medicare Workshop at 1398 Warehouse Ave, Helena, MT **SEE PSA ON PAGE 2**
- 10:00 am: Townsend Farmer's Market Winter Market, @ Reading Leaves Bookstore
- 10:00 am: MTN Grounds Coffee Roasting Competition @ Reading Leaves Bookstore
- 6:00 pm: Fireside Alcoholics Anonymous at 102 N. Walnut, 406-439-3945

Tuesday 18

- 5:00 pm: American Legion Post 42 Food and Bingo at American Legion Post 42 Club
- 5:30 pm: Alcoholics Anonymous at Shepherd of the Valley Lutheran Church, 301 N Cherry

Wednesday 19

- 1:00 pm: Townsend Pinochle Club at Broadwater County Sr. Center, 516 2nd St
- 7:00 pm: Broadwater Rural Fire Board Meeting at the Townsend Fire Station, 130 So Cedar St **SEE AD ON THIS PAGE**

Thursday 20

- Townsend Crimson Red Hat Ladies Lunch, Contact Sandy for information 406-949-0081
- 5:00 pm: **FREE** Homemade Dinner Served at American Legion, 211 Broadway, Townsend **SEE AD ON THIS PAGE**
- 6:00 pm: Celebrate Recovery Group at Mountain Valley Church, 107 E St, 406-980-1805
- 6:00 pm: Townsend Area Chamber of Commerce Meeting @ Canyon Ferry Brewing
- 7:00 pm: Al-Anon at Shepherd of the Valley Lutheran Church, 301 N Cherry

Friday 21

- 2:00 pm: Alcoholics Anonymous at Shepherd of the Valley Lutheran Church, 301 N Cherry
- 1:00 pm: Townsend Pinochle Club at Broadwater County Sr. Center, 516 2nd St

Saturday 22

- 1:00 pm: American Legion Post 42 Hosts FREE Thanksgiving Community Dinner at American Legion Club, 211 Broadway, Townsend
- 6:00 pm: Fireside Alcoholics Anonymous at 102 N. Walnut, 406-439-3945

East Helena Schools & Sports

NOVEMBER

Monday 17

- 6:30 pm: Booster Club Meeting - EHHS

Townsend School & Sports

NOVEMBER

Fri 14 - Sat 15

- MT Ag Expo at MSU

Friday 14

- NO SCHOOL**
- High School Volleyball State Tournament at MSU Bozeman
- 6:15 pm: Elkhorn Basketball Practice

Sat 15 - Sun 16

- EMT Training - Elementary Commons

Saturday 15

- Speech and Drama at Conrad
- TBD Middle School Boys Basketball @ Clyde Park

Sun 16 - Tue 18

- State Student Council at Great Falls

Mon 17 - Thu 20

- 11:45am: 1st and 2nd Grade SEL

Monday 17

- 5:30 pm: Old Baldy Beginning Writing - Library Classroom
- 6:00 pm: Winter Sports Meeting
- 6:15 pm: Elkhorn Basketball Practice - Elementary Gym

Tuesday 18

- 4:00 pm: Middle School Boys Basketball vs Livingston
- 6:00 pm: Elkhorn Basketball Practice

Wednesday 19

- 6:15 pm: Elkhorn Basketball Practice - Elementary Gym
- 7:00 pm: Old Baldy Open Gyms: Pickleball, Basketball, Laps
- TBD First Day of Winter Sports Practice

Thursday 20

- 4:30 pm: Middle School Boys Basketball at Manhattan
- 6:00 pm: Elkhorn Basketball Practice
- 6:30 pm: PTA Meeting in the Library Classroom

Friday 21

- NO SCHOOL** - Teacher PIR
- 6:15 pm: Elkhorn Basketball Practice - Elementary Gym

Saturday 22

- 7:30 pm: StuCo MORP - Stage Gym

EAST HELENA LIBRARY HOURS

Andrea Eckerson

Branch Manager

HOURS:

Monday - Wednesday:
10 am- 6:00 pm.

Thursday and Friday:
10 am- 5:00 pm

Saturdays: 10 am-1:00 pm

Sundays: Closed



Lewis & Clark Library East Helena Branch, 16 E Main Street in East Helena. Nancy Marks, MT43 News Photographer

NOVEMBER

Friday 14

- 3:30 pm: Family movies with popcorn and soda provided

Mon 17 - Tue 18

- Open hours: Craft Swap

Tuesday 18

- 4:00 pm: Switch Open Play for teens and tweens

Wed 19 - Sat 22

- Shop 'new to you' Crafts

Wednesday 19

- 10:30 am Storytime

Thursday 20

- 10:30 am: Storytime

LIBRARY HOURS

Broadwater School and Community Library

HOURS:

Monday-Thursday:
4:00 - 7:00pm

Friday-Saturday:
9:00am - 4:00pm

Sunday: 12:00 - 5:00pm

Curbside also available please call: (406)441-3461

Books & Babies Story Hour: Mondays 11-00am.-12:00pm the first 4 Mondays of the month.t



201 N Spruce St, Townsend Photo Provided

Three Forks Community Library

HOURS:

Monday & Wednesday through Friday - 10:00am to 5:00pm

Tuesdays - 10:00am - 7:00pm

1st Saturday of the Month: 11:00am - 2:00pm

Contact the library for details on clubs and events for a variety of ages at (406) 285-3747, or visit the website: threeforkslibrary.weebly.com



The Birds Nest

(406)266-1335

Unique Gifts, Antiques & Treasures

Connecting Local People to Locally Sourced Goods!

125 S Pine St, Townsend MT

CLASSIFIEDS

TURN TO PAGE 6 FOR LEGAL NOTICES!

Broadwater Rural Fire Board Meeting

3rd Wednesday each month.
Next meeting: November 19th, 7:00PM
At the Townsend Fire Station - 130 So Cedar St
See Board Meeting Agenda at: <http://www.facebook.com/BroadwaterCountyVolunteerFireDepartment>

FREE THURSDAY DINNERS!

Every Thursday, 5:00 - 6:30PM

American Legion Post 42,
211 Broadway, Townsend.

HOMEMADE & ALWAYS YUMMY!

Join us for a hot, delicious meal - no cost to you.

DONATIONS WELCOME & APPRECIATED

to help us continue supporting our community.

QUESTIONS? MENU? VOLUNTEER?

STOP BY OR CALL AFTER 3PM (406) 266-3611

LET US FEED YOU - AND TOGETHER WE CAN HELP OUR COMMUNITY

Hosted with care by the Sons of the American Legion (SAL).

Urgent Recall: Infant Formula Linked to Botulism Risk

Jon Ebelt

DPHHS

The Department of Public Health and Human Services (DPHHS) is advising consumers and health care providers of an urgent recall of two specific lots of ByHeart Whole Nutrition Infant Formula due to an outbreak of infant botulism linked to the product.

Since August 2025, the Centers for Disease Control and Prevention (CDC) has reported at least 13 cases of infant botulism across 10 states in infants who consumed the ByHeart powdered formula. Public health officials continue to investigate additional potential cases. While the product was distributed nationally, including to retail stores in Montana and online merchants, no cases have been identified in Montana to date.

The U.S. Food and Drug Administration (FDA) has issued a recall for the following two lots. Consumers are advised to verify the lot number on the bottom of their package and record the lot number to aid the ongoing investigation:

- Lot: 206VABP/251261P2 ("Use by 01 Dec 2026")
- Lot: 206VABP/251131P2 ("Use by 01 Dec 2026")

Parents and caregivers should immediately stop feeding infants the recalled ByHeart formula.

Parents should seek immediate medical attention for their child if the child exhibits symptoms of infant botulism, especially if they consumed this formula.

Symptoms can include:

- Constipation
- Weakness
- Difficulty feeding
- An altered cry
- Loss of head control

“The DPHHS urges health care providers to maintain a heightened suspicion for infant botulism in any infant presenting with compatible symptoms who was fed ByHeart powdered infant formula,” Dr. Doug Harrington, DPHHS State Medical Officer said. “We also recommend that providers make it a practice to ask all parents or guardians which formula brand is being fed to their infant patients, alert them to the ByHeart recall, and ensure that the recalled formula is not being used.”

This recall is not expected to cause a shortage of infant formula.

Retailers and consumers are advised to regularly check the FDA website for the most up-to-date recall information as the investigation into the outbreak continues. The full details of the recall are available on the FDA website:

<https://www.fda.gov/food/outbreaks-foodborne-illness/outbreak-investigation-infant-botulism-infant-formula-november-2025>

LOCAL BUSINESS DIRECTORY

A+ STORAGE
SEVERAL SIZES OF STORAGE UNITS
BOATS, RV's & TRAILER STORAGE
IN TOWNSEND, MT
WE ARE AVAILABLE WHEN YOU NEED US!
406-266-5377, 406-580-5425

ALLIED MACHINE
Quality & Service Since 1988
• RV Repair • Trailer Repair
• Pump Repair • Machine Work
• Aluminum Welding
406.266.3108
511 N. Front St., Townsend, MT

BSE EXCAVATING
7200 HWY 287, TOWNSEND, MT
BRANDON BAKKEN
SHANE TEW
P - (406)266-3772
C - (406)980-1100

CARQUEST AUTO PARTS
406-266-0080
308 N Front St, Townsend, MT
Mon - Fri 7:30 - 6:00pm
Saturday 9:00 - 4:00
Sunday 9:00 - 3:00

LEYLAND INSURANCE
TURNING 65 SOON?
CALL ME WITH ANY MEDICARE QUESTIONS!
MARK LEYLAND
406-438-7315
LEYLANDMT.COM

CONTACT MT43 NEWS TO LIST YOUR BUSINESS NOW!
MONDAY - FRIDAY
10:00AM - 2:00PM
408 BROADWAY, TOWNSEND
406.266.0086

MADISON RIVER 7812 US-287
Townsend, MT
PROpane
A THOMPSONGAS COMPANY
Metered Propane
Budget Billing
Lease Tanks
Service Department

Licensed Insured
Mar Painting
Interior Al Nyhart
Exterior (406) 223-3074

MONTANA HYDRAULICS LLC
Fabrication & Machining
• DD Custom Flatbed Dealer
• Laser Cut Parts Fabrication
• Machining Hydraulics
406-449-3464 | Townsend - Helena

Schauber Surveying, Inc. Land Surveyors
Surveying Montana and Broadwater County since 1993
Dan Swenson, PLS
Bernadette Swenson, PLS
64 Jack Farm Road, Townsend, MT 59644
406-266-4602 schaubersurvey@gmail.com

Special K
Plumbing and Heating
Danny Kurk- Owner
Open 24/7 | Townsend, MT
(406)922-1315

Support LOCAL Businesses

RESTAURANTS IN AND AROUND BROADWATER COUNTY
Dates and times may vary due to events, seasons or holidays.
Call the restaurant with any questions. Happy Dining!

American Legion Hall 211 Broadway, Townsend (406) 266-3611 Dining Hours: Tuesday Bingo/ Bowl & a Roll 5:00PM SPECIAL Event with Food: Thursdays 4:30PM FREE Community Dinner Bar hours may vary	Commercial Bar 101 Broadway, Townsend (406) 266-9956 Dining Hours: 10:00AM - 2:00AM Closed Thanksgiving & Christmas Menu available on Facebook	Mint Cafe 305 Broadway St, Townsend (406) 266-3867 Dining Hours: Mon - Wed 8:00AM - 2:00 PM, Thur - Fri 8:00AM - 8:00PM Sat - Sun 7:00AM - 8:00PM SPECIAL: N/A
The Betsy Sports Zone 217 Broadway, Townsend (406) 266-0001 Dining Hours: Tue-Sun 11:00AM-Close Closed Monday Takeout placed only in person. Menu: www.betsysportszone.com	Copy Cup 303 N Front St, Townsend (406) 980-8400 Please call in business hours. Drinks and Pastry Hours: Mon - Fri 7:00AM - 3:00PM Sat 8:30AM - 2:00PM Closed Sunday	Mountie Moose Bakery 109 Broadway, Townsend (406) 266-5800 Dining Hours: Tue - Sat 7:00AM - 4:00PM Closed Sunday & Monday Online Ordering: Mountie-moose-bakery.square.site
Bread and Butter Cafe 205 Broadway St, Townsend (406) 266-3025 Dining Hours: Tue - Fri 7:00AM- 2:00PM Sat 7:00AM- 12:00PM Closed Sunday & Monday Menu available on Facebook	Deep Creek Pizza Co. 415 Broadway Ste 2, Townsend (406) 266-0002 Dining Hours: 11:00AM - 8:00 PM Closed Sunday Menu: deepcreekpizzaco.com Accepting Orders Online	The Nook Coffeehouse 401 Broadway, Townsend (406) 490-8238 Dining Hours: Mon 7:00AM - 5:00PM Tue - Thu 8:00AM - 5:00PM Fri - Sun 9:00AM - 5:00PM Menu: FB @thenookcoffeehouse & readingleaves.net/thenookcoffeehouse
Bunkhouse Bar & Grill 8846 US-287, Toston (406) 266-5302 SPECIAL: N/A Dining Hours: 10:00AM – Close Grill off at 10:00PM	Fishtale Tavern 209 Broadway St, Townsend (406) 266-5582 Dining Hours: Tuesday 10:00AM - Midnight Wed - Sat 10:00 AM - Close Sunday 10:00 AM - Midnight Closed Monday Daily Specials: Facebook	Peking China 10 N Main St, Three Forks (406) 285-3225 Dining Hours: Mon - Sun 11:30AM - 8:30PM Menu: Google
Canyon Ferry Brewing & Taproom 300 Broadway, Townsend (406) 694-5687 Hours: Wed - Fri. 4:00PM - Close Sat and Sun 2:00PM - Close	Full Belli Deli 209 S Front St, Townsend (406) 266-5459 Dining Hours: Mon - Sun 8:00AM - 7:00PM OPEN 4th of JULY	Rocky Mountain Supply Deli 7847 US Hwy 287, Townsend (406) 266-3456 Hot & Cold To-Go Hours: Mon-Fri6:00AM - 6:00PM Menu: Board Inside Store for Take-and Bake or Ready-to-Eat Pizza Call Ahead or Order Inside
C Hangin” C Mercantile & Creamery 310 S Front St, Townsend (406) 266-9087 Dining Hours: Mon - Fri 7:30AM - 7:00PM Sat 8:00AM - 7:00PM Sun 9:00AM - 5:00PM Menu: Facebook changinmerc.square.site	Kick Start Nutrition 500 N Front St, Townsend (406) 266-0033 Dining Hours: Tue - Fri 7:00AM - 3:00PM Sat 9:00AM - 3:00PM Closed Sunday & Monday Daily Specials: Facebook & Instagram	TB’s Diner 316 N Front St, Townsend, (406) 266-0099 Dining Hours: Mon- Sat 7:00AM - 8:00PM Sunday 7:00AM - 7:00PM Specials: Facebook
		Vaquero’s Mexican Restaurant 219 Broadway St, Townsend (406)266-1860 Dining Hours: Tue - Sun 11:00AM - 9:00PM Closed Mondays Menu & Specials: Facebook Call Ahead or Order Inside

Broadwater Area Restaurants

Contact MT 43 News, Monday- Friday 10 - 2,
if you would like to talk about how to add your dining location and open hours to our paper!
406.266.0086 | 408 Broadway, Townsend, MT

CryptoQuip
This is a simple substitution cipher in which each letter used stands for another. If you think that X equals O, it will equal O throughout the puzzle. Solution is accomplished by trial and error.
Clue: L equals T
H L E R S Q R C F H J Y R M S M P I
I M S C X E H M L V P M O V H D O S J
R C L P H F H D D S M W H C J X M R S J
“ F R Q S Y S H D D W P N M Y P C S L ! ”
©2025 King Features Synd., Inc.

KNIGHT MOVES

Y	U	D
I		S
T	L	P

Unlock the power of chess to find the eight-letter word of the day. Choose your starting letter carefully, then move around the square in a one by two fashion to get to the next letter.
© 2025 King Features Syndicate

Weekly SUDOKU

	9		1			4		
8			4			5		1
4		2		7			9	
2		4			9			
	8	5						
7	3			4	1	6		8
	4		5	8	6			
						3	4	
9		1						

Place a number in the empty boxes in such a way that each row across, each column down and each small 9-box square contains all of the numbers from one to nine.

DIFFICULTY THIS WEEK: ♦♦♦
♦♦♦ Moderate ♦♦♦ Challenging
♦♦♦♦ HOO BOY!
© 2025 King Features Synd., Inc.

Super Crossword

PONTIFICATION

ACROSS 1 Stood for 6 Mountain peak topper 13 Place to keep cargo 20 Proprietor 21 Seat of Nassau County, New York 22 Holiday marches 23 1970 Best Actress nominee for "The Great White Hope" 25 Enigmas 26 Walk- (tiny roles) 27 Rank above maj. 28 — acid (vinegar component) 30 Ruhr article 31 Desperately, informally 35 Country singer with the hit "Blue Ain't Your Color" 37 "Livin' La Vida Loca" singer 41 No, in Nuremberg 42 Ending for peek or bug 43 Making a comeback 46 Super angry 51 Month, in Mexico 52 Strong — ox 54 She won gold in the 200-meter dash at the 2012 Olympics 57 French term for unrefined works, as by untrained painters 59 Furry wrap 60 "It could be" 61 Make a phone call to 62 Film directors Joel and Ethan 63 Hour div. 64 He played Jesse Pinkman on "Breaking Bad" 66 "Rocket Man" singer 72 Poem type 73 Light bulb power units 76 Tot's injury 77 Adopt 82 Stuck in mud 83 Tolkien's hole-dwellers 84 He played Lieutenant Starbuck on "Battlestar Galactica" 86 Snips 87 — -fi film 88 British china 89 Oran native 91 "Be —!" ("C'mon, help me out!") 92 "Rebecca" actress Diana 95 Civil rights activist with the comedy album "In Living Black and White" 98 Best Supporting Actress winner for "The Fighter" 104 Woman of the future? 105 Resting atop 106 Threat ender 108 "Boo- —!" 109 Phased-out character on "The Simpsons" 112 Pre-book documents 114 "Who's Sorry Now?" singer 119 Cyclone's kin 120 Totally unknown by 121 Get together with alumni 122 Increase the slope of 123 Elk relative 124 10 featured last names in this puzzle are also the names of these DOWN 1 Magic charm 2 He played Obi-Wan multiple times 3 Raggedy — (classic dolls) 4 Born, to Yves 5 Funnywoman Ullman 6 Suspect foul play 7 Vote down 8 — par with 9 — Ho Lee (name in 2000 news) 10 Sonata end 11 Smart — 12 French capital, in song 13 Elf 14 Chinese exercise system 15 City reg. 16 Angler's boot 17 Improvise 18 Actress Davis 19 Ruhr city 24 Rich soil 29 Sounds of small bells 31 "Citizen Kane" studio 32 Cereal husk 33 Fla.'s ocean 34 Grow wider 36 Join 37 Marriott rival 38 Portugal's peninsula 39 Sharer of top billing 40 Floss fiber 44 Woeful things 45 Dec. 31 47 Yank's foe 48 Bristol beer 49 "— a pity!" 50 Outer: Prefix 52 Make — for it 53 "What if ..." 55 Fail to put in 56 Futuristic tiny machine 58 Slo- fuse 59 Note after fa 62 Billiards stick 63 FC Dallas' sports org. 65 Yemeni port 66 Takeoff abbr. 67 Wealthy Brits 68 Occupation 69 San Luis — 70 Stolen ride 71 In a meddling way 73 Actress Kristen 74 Shaped 75 Bowfit-fitting game 77 Mag workers 78 Imbibe slowly 79 Virtuoso 80 Assented to 81 App-ordered rides 82 Cato's 1,550 83 Desirous of 85 Aerie bird 86 Torte or baba 90 Drink cooler 91 Dept. of Justice chiefs 93 Tristan's love 94 Actress Greer 96 Posterior 97 Musical note equivalent to F 98 Necessities 99 Orlando theme park 100 Peter of "M" 101 Combined 102 Actor Dana 103 "— Mio" sports org. 107 City WNW of Tulsa 109 "Can I borrow — of sugar?" 110 Cone-bearing tree 111 Wields 113 Racing circuit 115 Actor Beatty 116 Suffix with hero 117 French for "summer" 118 — -noir film
--

“ My father is going to showing some of the games he played as a boy — so no _____.”

SCRAMBLERS
Unscramble the letters within each rectangle to form four ordinary words. Then rearrange the boxed letters to form the mystery word, which will complete the gag!
Arrange
GATES _____
Toil
GUDDER _____
Happy
HIBELT _____
Danger
NEECAM _____
TODAY'S WORD

Broadwater County Planning Board Pauses Subdivision, Highlights Water Rights Concerns

Rachael Brug
Staff Reporter



The Broadwater County Planning Board hit the pause button on a proposed minor subdivision at its November 10 meeting, citing several errors in the developer’s application and growing concerns about water rights in the region.

Chair Ed Shindoll, joined by board members Charles Freshman and Shay Counts, as well as Community Development Director Nicole Brown, reviewed the Spiker Tract B Minor Subdivision proposal. The board identified inaccuracies in multiple key documents, including maps and water rights reports, and voted unanimously to delay the application until corrections are made.

While no members of the public attended, the meeting underscored pressing local issues. Nicole Brown briefed the board on a recent Department of Natural Resources and Conservation (DNRC) meeting, explaining how a 2024 court ruling sharply limits water allocations for newer subdivisions. The ruling means that, for parcels created after 2014, water rights are now capped at ten acre-feet per original parcel, not per new lot—a change that could hamper future growth and home sales in Broadwater County.

The board also discussed upcoming amendments to subdivision regulations, with a public hearing scheduled for November 24.

As Broadwater County continues to navigate complex land and water issues, the Planning Board emphasized its commitment to transparency and due diligence—ensuring that both developers and residents are well-informed and protected.

Thousands of Pounds of Pork, 6

of them have turned out to be “owned domestic swine running at large,” according to an agency press release.

In this particular case, there were some unique circumstances related to a death in the family that owned the swine, Szymanski said.

“This situation just kind of got out of control,” she said. “It has been allowed to maybe fester a little bit longer than a traditional circumstance we would encounter.”

Szymanski said trapping operations began earlier this month, and all parties involved are pleased the meat will be distributed at food banks around the state.

On Oct. 18, the first swine shipment arrived at Producer Partnership, a nonprofit animal processing facility that works with agricultural producers to turn donated livestock into food for schools and other nonprofits. Trapping operations are ongoing with another 30-45 animals yet to be collected, Szymanski told MTFP on Oct. 22.

Producer Partnership is the country’s only nonprofit meat processing facility inspected by the U.S. Department of Agriculture. A product of the COVID-19 pandemic, Producer Partnership is located between Big Timber and Livingston and employs about 10 people.

Producer Partnership president and founder Matt Pierson estimates that the Montana Food Bank Network will receive between 8,000 and 14,000 pounds of pork from the swine. He said he’s unaware of any other organizations set up to take on these kinds of “oddball projects.”

“Our hope through this partnership is that people realize there’s a more amicable, better way to solve these issues without just going in and shooting everything,” he said. “It helps solve a problem for the state, and it helps put all that meat into the food bank.”

County is Doing Safety Upgrades

Broadwater County Commissioners

The county is in the process of upgrading safety for residents and employees.

The first step is that on Dec 1st, the only way to enter the courthouse will be through the north entrance, which is on the Billings Clinic side. This is the closest door to the handicapped parking and the elevator.

In the next several months, there will be more upgrades to ensure safety for all.

This effort is happening in counties across the state. Grants will cover some of the changes.



Road Classifications in Montana: County vs. Private

Broadwater County Commissioners

Montana’s wide-open spaces are stitched together by all kinds of roads – some public, some private, and some that fall in between. Whether you’re a landowner, developer or just trying to figure out who’s responsible for fixing that bumpy patch of road, understanding the differences between county roads, private roads, and private roads open to public use can save a lot of confusion.

County Roads

There are eight different methods of establishing a county road: Petition, Dedication and Acceptance, Eminent Domain, Transfer by State, Resolution by County Commissioners, Court Recognition, Easement Acquisition, or Prescriptive Use. Each method is governed by specific provisions of the Montana Code Annotated (MCA), particularly under Title 7, Chapter 14. The common theme with each method is that the road must be officially adopted as a county road, typically by a resolution of the county commissioners or by order of a judge.

Things to know:

- Maintenance – While county roads are often maintained by the county, this is not always the case. MCA 7-14-2101(1)(a) states that county commissioners may lay out, maintain, control, and manage county roads. The use of the term “may” indicates that counties are not obligated to maintain all county roads. If the county does not maintain the road, maintenance would fall to the landowner(s) wanting the work completed.
- Ownership – A county road is not necessarily owned by the county. Often, the land itself is privately owned, but the county holds and controls a right-of-way easement, meaning the public can legally use the road.
- County Roads are open to the public unless restricted by law (e.g., weight limits or seasonal closures).

It is important to note that a road shown on a subdivision plat as “dedicated to public use” does not automatically become a county road. As stated earlier, a road must be formally accepted by the county through a resolution to be officially designated as a county road.

Private Roads

Private roads are restricted to use by the public. They are usually built to access private property and are not maintained by any public agency.

Things to know:

- Only those with legal rights can use the road – typically by ownership or granted through an easement.
- Maintenance is up to the property owner. If multiple owners share the road, a written road maintenance agreement, such as through a shared driveway agreement or an easement agreement, is highly recommended.

Private Roads Open to Public Use

This category is possibly the most confusing of the three and is commonly found within subdivisions. These are privately owned roads that are open to the public.

Things to know:

- While privately owned, the roads have been formally dedicated for public use, usually by an easement or a dedication on a subdivision plat.
- These are not county roads.
- The landowners, or the Home Owners Association (HOA), are responsible for all maintenance. This is commonly done through a road maintenance agreement or a Rural Improvement District (RID).

Understanding these road classifications will help you know who can use the road, who’s responsible for maintaining it, and what your legal rights are. When in doubt, consult your local county officials and/or MCA to verify the status of a road and your responsibilities related to it. Clear knowledge leads to better decisions and fewer surprises down the road.

Broadwater County Commissioners Agenda

Broadwater County Commissioners



515 Broadway, Townsend
Meetings are held at the Flynn Building on 416 Broadway St.
Current and previously recorded meetings, official agenda, and minutes may be viewed on the website at <https://www.broadwatercountymt.gov>.

Per Montana Code Annotated (MCA) 2-3-202, the agenda must include an item allowing public comment on any public matter that is not on the agenda of the meeting and that is within the jurisdiction of the agency conducting the meeting. Public comments will be taken either in writing before the meeting or in person at the beginning of the meeting. Mail and items for discussion and/or signature may occur as time allows during the meeting. Issues and times are subject to change. Working meetings will be posted on the agenda and will not be recorded.

OFFICIAL agendas are posted at least 48 hours in advance of the meeting in the Courthouse (1st-floor bulletin board), on our website at www.broadwater-countymt.gov, in the window of the Flynn Building, and in the local MT43 Newspaper when possible to meet the publishing deadline.

Tuesday, November 18, 2025

10:00 AM Working meeting with Bill Jarocki, County Administrative Officer, CAO office, regarding projects and deadlines

Wednesday, November 19, 2025

10:00 AM Public comment on any subject not on the agenda, that the Commission has jurisdiction over

10:00 AM Discussion/Decision, County Treasurer, Interlocal Agreement # DOJ-MVD-FY2025-0044 between Department of Justice Motor Vehicle Division and Broadwater County Treasurer

10:05 AM Discussion/Decision, Nichole Brown, Community Development and Planning Director, Westside Trails Major Subdivision, request deviation from Broadwater County Subdivision Road Standards

1:00 PM Working Meeting with Montana Land Reliance, Garret Titus, Landowner Advocacy Manager, Flynn Building, learn about Conservation Easements and an opportunity to ask questions

Thursday, November 20, 2025

10:00 AM Working meeting with Bill Jarocki, County Administrative Officer, CAO office, regarding projects and deadlines

The county strives to make the meeting available virtually but cannot guarantee access due to platform failure, internet interruptions, or other potential technological malfunctions

Items for Discussion / Action / Review / Signature – Consent Agenda

- Certificate of Survey review
- Management – on-going advisory board appointments, by-laws approval, interlocal agreements and non-financial contract renewals
- Claims/Payroll/minutes
- County Audit / Budget
- Mail – ongoing grants
- Correspondence – support letters
- Task Orders

Debi Randolph, Vice Chair
(406) 266-9270 or (406) 980-2050
drandolph@broadwatercountymt.gov

Jesse Swenson
(406) 266-9272 or (406) 980-1213
jswenson@broadwatercountymt.gov

Lindsey Richtmyer, Chair
(406) 266-9271 or (406) 521-0834
lrlichtmyer@broadwatercountymt.gov

E-mail: commissioners@broadwatercountymt.gov
Future Meetings will be held at the Flynn Building (416 Broadway)
Please note: These meeting times/dates may change, please check the county website

- Board of Health Meeting on November 17th at 3:00 PM
- County Parks and Recreation Meeting on November 17th at 6:00 PM
- Noxious Weed Board Meeting on November 18th at 6:00 PM
- Airport Board Meeting on November 19th at 6:00 PM
- Fair Board Meeting on November 24th at 5:15 PM
- Trust Board Meeting on December 9th at 11:30 AM
- Planning Board Meeting on December 9th at 1:00 PM
- Solid Waste Board Meeting on December 9th at 6:00 PM

The Commissioners may be attending these board meetings (except the Planning Board)

ADVERTISING WORKS!

FREE Community Dinners at Post 42 in Townsend, hosted by Sons of American Legion, have served more locals each week since advertising

WITH MT 43 News

CALL US TODAY

(406) 266-0086

DEADLINE FOR CURRENT WEEK: TUESDAY @ 10 AM

Student Finds Success Opportunity: Nursing Scholars Edge Direct Entry Program

Megan Strickland

Montana Tech Marketing and Communications Specialist

When Caitlin Olson researched nursing programs as a senior at Broadwater High School, two things drew her to Montana Technological University’s Sherry Lesar School of Nursing: reputation and affordability.

Online searches of “#1 Nursing School” kept bringing up Montana Tech.

“Montana Tech has the best nursing school in Montana, and I wanted to be part of that,” Olson said. “I knew if I wanted the best education and the most opportunities, Montana Tech was the place to go.”

Olson also found that Montana Tech was more affordable than other nursing schools in the state. She was further able to cut down costs by applying for every scholarship she could find, earning over \$30,000.

“It was a huge relief,” she said. “I knew nursing school would be rigorous, so having that financial support meant I could spend more time on what mattered — learning how to be the best nurse I can be.”

When Olson visited campus, Assistant Professor Laurie Noel told her about another opportunity that could make her nursing journey easier: the Nursing Scholars Edge Direct Entry Program.

The Nursing Scholars Edge Direct Entry Program selects 25 top Montana high school seniors every year from a pool of qualified applicants.

Additionally, applicants will be considered for a \$500 scholarship. All incoming freshmen selected for the Nursing Scholars Edge Direct Entry Program secure clinical spots in the Sherry Lesar School of Nursing.


By applying and being selected for one of the Nursing Scholars Edge Direct Entry Program spots, the student needs to maintain a 3.5 grade point average in pre-nursing coursework in order to enroll in the clinical portion of the nursing program, after taking prerequisites. Program participants get to bypass one of the major hurdles to clinical selection: the Test of Essential Academic Skills (TEAS) exam.

The TEAS exam is a test administered to gain admission into the clinical portion of nursing schools. At Montana Tech, your exam score is factored into your application, along with your overall GPA and grades in certain prerequisites.

Director of Nursing, Janet Coe, calls the program a tremendous opportunity.

"The ability to have direct entry into the clinical portion of a nursing program is a tremendous opportunity for our Montana students," Coe said. "It awards a prestigious honor for students with a clear understanding of the professional nurse role and who demonstrate high academic performance, along with a strong work ethic and leadership. Selection criteria gives students from all Montana communities, large and small, an opportunity to be honored."

The program allowed Olson to begin her nursing journey with focus and peace of mind.



Caitlin Olsen working with a medical dummy
Montana Tech Photo

“When I found the Nursing Scholars Edge program, it felt like the right fit. It gave me confidence knowing I had a spot waiting for me. Instead of stressing about whether or not I’d get into the clinical program, I was able to concentrate on my studies and on getting involved,” she said.

Looking ahead, Olson hopes to specialize in women’s health.

“My dream is to work in labor and delivery, and eventually midwifery,” she said. “Down the road, I’d also love to teach future nurses. The idea of giving back to students the way my professors have inspired me really excites me.”

For future students considering Montana Tech, Olson’s advice is straightforward.

“Apply early, apply for all the scholarships you can, and keep your grades up. And definitely come tour campus. It’s one thing to hear about the program, but once you’re on campus, you can really see how much support there is here.”

Applications to the Nursing Scholars Edge Program are open now. The deadline to submit is 4 p.m. on January 15, 2026. Questions? Email nursing@mtech.edu.

View the Nursing Scholars Edge website at <https://www.mtech.edu/nursing/scholars-edge/index.html>

Lewis and Clark Caverns: Lighting the Way

Fish, Wildlife and Parks

Candlelight tours at Lewis & Clark Caverns are just one destination for winter Park visitors

HELENA – Need an idea to keep your Christmas company entertained and challenged, with maybe a little education thrown in? Take them on a candlelight cave tour at Lewis & Clark Caverns State Park. The tour provides an intimate look at cave formations, known as speleothems. Visitors will visit Decision Rock, the Cathedral Room, the Pit, Garden of the Gods, the Brown Waterfall Room and the Paradise Room.

The 2-hour, 2-mile tour gains an elevation of 300 feet, ascends more than 100 stairs and descends about 500 stairs. Hikers should expect the route to be wet and slippery.

Tours are scheduled for Dec. 19-21 and again from Dec. 26-28. Tickets will be available to purchase online on the Monday after Thanksgiving (Dec. 1); they will not be sold at the park visitor center.

What to expect:

Candlelight tours follow the entire developed cave route, with a ¾-mile uphill walk on a potentially icy and snowy path to reach the cave entrance. Visitors must complete this within 30 minutes to be eligible for the tour. Participants are encouraged to be prepared for winter conditions on roads and trails at the park.

Walking the ¾-mile underground trail involves turning, bending, duck waddling and a slide. The first half will use the cave lights, and the second half will use the glow of candle lanterns.

The tour concludes with a flat, half-mile walk back to the visitor center on a potentially icy or snowy path. The total walking distance is 2 miles.

During the tour, visitors will pass near hibernating bats. White-nose syndrome, a fungus that affects bats but not people, has reached Montana. Bat mortalities from the disease have exceeded 80 percent in some areas. Managers require precautions from visitors to reduce additional stressors to this fragile cave resource. Visitors cannot bring any clothing or other items that have been to another cave or mine in the past five years.

All tours are led by a trained guide. No self-guided tours are available. The cave has an average temperature of 50 degrees Fahrenheit and over 90 percent humidity year-round, regardless of outside weather. Most areas are dimly lit, and some are narrow and enclosed. Visitors should consider bringing a warm jacket, good walking shoes and bottled water. Pets, strollers, backpacks and purses are not allowed.

Lewis & Clark Caverns State Park is about 15 miles southeast of Whitehall, along Montana Highway 2. For more information about the park, call 406-287-3541.


A link to purchase tickets will be posted on the FWP website on Dec. 1. For more information, visit fwp.mt.gov/stateparks/lewis-and-clark-caverns

Many Montana State Parks have a lot to offer during the colder, darker months. While some parks close in November, many offer shelter from the cold at their visitor centers. Those include Bannack, Chief Plenty Coups, First Peoples’ Buffalo Jump, Lone Pine, Makoshika, Pictograph Cave and Travelers’ Rest.


Parks without visitor centers but still fun to visit in winter are Lake Elmo, Missouri Headwaters, Giant Springs and Spring Meadow Lake.

HOCUS-FOCUS

BY HENRY BOLTINOFF



Find at least six differences in details between panels.



©2025 King Features Syndicate, Inc. All rights reserved.

Differences: 1. Leg is taller. 2. Door is moved. 3. Tree is smaller. 4. Mailbox is taller. 5. House in distance is not as wide. 6. Pages are added to newspaper.

Tomato Soup for the 21st Century

Jon Bennion
Montana Free Press

Do the culinary classics demand preservation and protection so they can be handed down unchanged from generation to generation? Or are we allowed to put our own spin on them so they can carry new meanings and (gasp!) even be improved?

I like to think I have a foot in both camps. We should learn the classics and their histories and pass them along. We should also feel free to apply our own twists to the tried and true.

Tomato soup holds a special place in my belly, and likely in yours. Don’t we all remember a favorite Montana diner version, served with salty crackers or a gooey grilled cheese?

Some would say the classic tomato soup is already perfect, so don’t mess with it. I can’t argue with that. But my love of food includes adventure, which drives me to explore new flavors, ingredients and techniques. That often leads me across borders in search of inspiration.


Today’s tomato soup borrows flavors originating far from home — east Africa, to be exact. Many Westerners are just discovering berbere, an Ethiopian spice blend combining chilis, paprika, coriander, ginger, cumin, cinnamon, cardamom, nutmeg, allspice and/or clove. As with any blend, berbere’s ingredients and ratios can vary from region to region, and even family to family.

Berberere produces a warming effect that is the source of its name (the word translates as “hot”). It’s not going to knock your socks off with heat in the context of this soup, but its complexity adds a layered range of flavors that will make your taste buds happy. Some stores carry berbere in the spice aisle. You can also order it online.

My version of tomato soup also features a second deviation that connects it back home to Montana. I add Montana-grown red lentils for flavor, viscosity and a boost of nutrition. Protein isn’t typical of tomato soup, but once you try these red lentils you may wonder why you ever made tomato soup without them. They’re small enough to cook quickly without need of a pre-soak.

This recipe is beautifully simple to prepare. You don’t need precision chopping skills, since the aromatics eventually get blended smooth. And you can easily make a big batch and freeze it for ready-to-go lunches or dinner on a too-busy day.

I’ll never stop enjoying the diner-classic tomato soup I grew up on. It always hits the spot, especially as we enter the crisp temperatures of soup season. At the same time, I’m confident you’ll be missing out on an equally memorable meal if you don’t try this 21st-century version.



Bowl of Tomato Soup for the 21st Century
Photo Credits: Jon Bennion

21st CENTURY TOMATO SOUP RECIPE

Serves 7-8


1 tbsp freshly chopped garlic
1 tbsp freshly chopped ginger
1 medium onion, roughly chopped
28 oz. can good quality whole peeled tomatoes
4 cups low-sodium chicken or vegetable broth
1 tbsp berbere spice mix
1 tbsp tomato paste
1/2 cup red lentils
2 tbsp olive oil

In a large saucepan or Dutch oven, sweat the chopped onions in olive oil with salt and pepper on medium-low heat for 10 minutes, stirring occasionally. Add the chopped garlic and ginger, tomato paste and berbere, and cook for three minutes. Add the broth, lentils and canned tomatoes and raise the heat until it reaches a gentle simmer. Place a lid on the pot, slightly offset, and drop the heat to low. Let it simmer for 30 minutes.

Now blend the soup with an immersion blender until very smooth. Taste for salt, pepper and berbere levels and adjust according to your preference. Eat with a piece of crusty bread and/or top with a mixture of 1/2 cup plain yogurt and 1/4 cup milk. Feel free to sprinkle with a dusting of more berbere.

Stevenson Wilke

Funeral Home & Crematory



Family Owned and Operated

Honorably Serving Montana Families for Three Generations

www.stevensonwilke.com (406) 266-4213

Just Like Cats & Dogs

by Dave T. Phipps

I'M PRESCRIBING YOU SOME MEDICATION FOR THIS. LET'S SET UP AN APPOINTMENT TO TREAT ALL THE SIDE EFFECTS FROM IT.

GRIN and BEAR IT

© North America Syndicate, Inc. World rights reserved.

Out on a Limb

by Gary Kopervas

ONE STEP CLOSER AND I'LL POP YOU IN THE CHINS, I'LL TIE YOUR THUMBS INTO A KNOT, GIVE YOU AN ATOMIC WEDGIE, OVERFEED YOUR LAWN, CANCEL YOUR NETFLIX ACCOUNT, THEN I'LL HIDE YOUR DENTAL FLOSS, CHANGE THE SETTING ON YOUR SLEEP NUMBER BED, THEN...

JACK OVER-REACHER

Amber Waves

by Dave T. Phipps

DUDES, NOW THAT WE'VE AGREED ON A NAME AND CREATED OUR IMAGE, THERE'S ONE LAST THING.

WHO KNOWS HOW TO PLAY DRUMS OR GUITAR?

SERIOUSLY! HOW CAN I ROCK THE MASSES IF THE BAND CAN'T EVEN SHRED? THAT'S IT. I QUIT!

NICE, OUR FIRST BAND BREAK UP. THAT'S SO METAL!

The Spats

by Jeff Pickering

I'M GOING TO SEE THE DENTIST TODAY.

WHAT TIME IS YOUR APPOINTMENT?

TOOTH HURTY.

THIMBLE THEATRE PRESENTS

POPEYE

BY RANDY MILHOLLAND

WHAT ARE YOU DOING, SEA HAG?

I'M SPYING ON POPEYE AND JUDGING HIS CHOICES.

GET A HOBBY.

HATING IS A HOBBY!

THIMBLE THEATRE PRESENTS

"SHADOW OVER FIN'S SOUTH"

PART 12

THE POSSUM MONSTER THAT THE PEOPLE OF FIN'S SOUTH SUMMONED IS RAMPAGING AND SET TO EAT THE WHOLE POPULATION, BUT OLIVE AND POPEYE FOUND A WAY TO BANISH HIM WITH A BANG.

THE SCROLL SAYS IT'LL TAKE THREE STICKS OF DYNAMITE TO SEND THE MONSTER BACK.

I'LL EATS ALL TH' SPINACH I GOTSK ON ME TO HIT 'EM EVEN HARDER!

IS THAT A GOOD IDEA? THEN LETTIN' A BIG POSSUM EAT E'RYONE!

UNHAND- ER, UNCLAW HIM, YA INTER-DIMENSIONAL TRASH RAT!

I'LL GIVES YA A CHOICE, YA KIN LEAVE ON YER OWN OR I WILL MAKE YA!

HA! I'D LIKE TO SEE YOU--

-TRY?

YOU'D BE SURPRISED HOW MANY PEOPLE END UP HERE AFTER SAYING THAT.

TIGER

by BUD BLAKE

DONATION PRICE MATCH

September 1st - November 30th, Town Pump will match any donations to our Broadwater Food Pantry dollar for dollar!

HOW CAN YOU DONATE?

- Drop off at the Food Pantry on Broadway first or third Fridays 9:30- 11:00am or Saturday 9:00- 10:45am.
- Donation boxes at Bob's Supermarket
- Mail in to P.O. Box 1164, Townsend, MT 59644
- Come to our booth at Fall Fest, October 4th - 5th

Weekly SUDOKU

Answer

5	9	6	1	3	8	4	7	2
8	7	3	4	9	2	5	6	1
4	1	2	6	7	5	8	9	3
2	6	4	8	5	9	1	3	7
1	8	5	7	6	3	9	2	4
7	3	9	2	4	1	6	5	8
3	4	7	5	8	6	2	1	9
6	2	8	9	1	7	3	4	5
9	5	1	3	2	4	7	8	6

It's that time of year again!

CHOOSE

TIZER MEATS

for Your GAME PROCESSING

tizermeats.com | 406-422-4822

Super Crossword

Answers

M	E	A	N	T		S	N	O	W	C	A	P		S	T	O	W	A	G	E		
O	W	N	E	R		M	I	N	E	O	L	A		P	A	R	A	D	E	S		
J	A	N	E	A		A	L	E	X	A	N	D	E	R		R	I	D	D	L	E	S
O	N	S		C	O	L		A	C	E	T	I	C		E	I	N	E				
				R	E	A	L	B	A	D		K	E	I	T	H	U	R	B	A	N	
R	I	C	K	Y		M	A	R	T	I	N		N	E	I	N						
A	B	O		O		R	A	L	L	I	N	G			I	R	A	T	E			
M	E	S		A	S	A	N		A	L	L	Y	S	O	N	F	E	L	I	X		
A	R	T	B	R	U	T		S	T	O	L	E		M	A	Y	B	E	S	O		
D	I	A	L	U	P		C	O	E	N	S		M	I	N							
A	A	R	O	N		P	A	U	L			E	L	T	O	N	J	O	H	N		
						O	D	E		W	A	T	T	S		B	O	O	B	O		
E	S	P	O	U	S	E		M	I	R	E	D		H	O	B	B	I	T	S		
D	I	R	K	B	E	N	E	D	I	C	T		C	U	T	S		S	C	I		
S	P	O	D	E			A	L	G	E	R	I	A	N		A	P	A	L			
						R	I	G	G		D	I	C	K	G	R	E	G	O	R	Y	
M	E	L	I	S	S	A		L	E	O		S	E	E	R	E	S	S				
U	P	O	N		O	R	E	L	S	E			Y	A	H		A	P	U			
S	C	R	O	L	L	S		C	O	N	N	I	E	F	R	A	N	C	I	S		
T	O	R	N	A	D	O		A	L	I	E	N	T	O		R	E	U	N	E		
S	T	E	E	P	E	N		R	E	D	D	E	E	R		P	O	P	E	S		

It's your future. Let's protect it.

Dustin Gillaspie
410 Broadway, Townsend, MT
406.442.0456
fbfs.com/find-an-agent/
dustingillaspie

FARM BUREAU FINANCIAL SERVICES

Auto | Home | Life | Annuities | Business | Farm & Ranch

Farm Bureau Life Insurance Company* West Des Moines, IA. Mountain West Farm Bureau Mutual Insurance Company*Laramie, WY. *Company provider of Farm Bureau Financial Services. PR-SM-B (10-21)

CryptoQuip

answer

A thieving admirer of French artwork walked into a gallery and cried "Give me all your Monet!"

SCRAMBLERS

solution

1. Stage; 2. Drudge; 3. Blithe; 4. Menace

Today's Word

LAUGHING

— KNIGHT MOVES —

Answer

Y	U	D
I		S
T	L	P

STUPIDLY

MT 43 News, Inc.

Published & edited by the Board of Directors

Editors in Chief: Victor Sample and Nancy Marks

408 Broadway Street Suite A Townsend MT 59644-2323 (406) 266-0086

MT43News@MT43News.com

Deadlines

Stories, News & Letters to the Editor: Tuesday 12 p.m. Advertising: Tuesday 10 a.m.

newspaper may not be reproduced, redistributed or archived, in whole or in part, physically or electronically, without the written permission of MT 43 News, Inc.

ISSN 2833-2571
USPS Bulk Mailing Permit #43
First Publication Date: July 15, 2022

MT 43 News is published Thursday of each week in Townsend, MT. Its service area is Broadwater County, MT.

Affiliation

Letters to the editor, guest columns, Op-Ed, editorials and advertising do not necessarily reflect the opinion of MT 43 News, Inc. or any of its executives, employees, or advertisers.

Forms and Policies

https://mt43news-business-services.com/node/124

Soil Testing: *Take Advantage in the Fall*

Allison Kosto
MSU Broadwater County Extension Agent



One of the more frequently asked questions in my office is, “what type of fertilizer should use?” Like so many things, it depends. There isn’t a “one size fits all” fertilizer. All soils are unique, and Broadwater County has a wide range of soil types. It’s important to match the fertilizer needs with the soil based on your soil texture, current nutrient status, plant community, yield goals, production type and budget. So if you ask me this question, I’ll probably respond with another question of “did you test your soil?”

A soil analysis identifies nutrient shortages and allows for the development of a fertilizer and amendment plan. Applying too much fertilizer or targeting the wrong nutrients can result in toxicities or enhance existing deficiencies. For example, gardens have a large variety of plants, and each one has different nutritional needs and sensitivities. Therefore, it’s important to avoid over-fertilization. It can also save you money from unnecessary fertilizer treatments!

Fall provides a good opportunity to collect soil samples for a few reasons. Time is an important factor. Spring always feels like a rush to make a decision to fertilize and get seeds in the ground. This is compounded by unpredictable and often uncooperative

weather conditions. Fall allows for a longer window for collecting samples to match with ideal conditions. The soil should be moist, not too wet and not too dry. It also allows for a longer time to process the results and make decisions. This is especially valuable in agricultural fields where fertilizer is a costly input and requires careful evaluation.

For the most part, soil nutrients will not change significantly from spring to fall with the exception of nitrogen. Nitrogen is highly mobile in the soil so depending on the type of winter, crop residual and soil organic matter, it can fluctuate significantly. If nitrogen is a major focus and rationale behind sampling, then it might be necessary to wait or resample just nitrogen in the spring.

Collecting in the fall may also give you an additional window for application. Phosphorus and potassium can be successfully applied in the fall because they will not leach away with winter precipitation. Applying them in the fall allows these nutrients to be available immediately in the spring as plants come out of dormancy.

Nitrogen is generally not recommended in the fall because there is a larger risk of leaching over the winter. The exception to this rule is perennial cool-season pastures and lawns. If timed correctly, a late summer to early/mid fall application of nitrogen fertilizer can help with root development, winter survival and early spring green-up. Don’t wait too long in the fall, though or you won’t get enough benefit from the fertilizer to justify the cost. Also,

avoid fertilizing if it is really dry or you will risk nitrate accumulation in the plant and less benefit on root and growth development.

A basic soil test usually costs \$15 to \$20 per sample. There are many different labs that will do soil testing. At the Extension Office, we can help you with this process if desired and will provide free recommendations when the test is returned. Home soil test kits are available. However, their accuracy is often questionable. If you go that route, I’d recommend choosing a test kit that has been specifically calibrated for our high alkaline soils of the west and keep in mind that it will only give you a ballpark measurement.

Soil sample strategies differ slightly for gardens and fields. However, the general philosophy is the same of trying to get a representative sample from the area. This means that you should sample from a variety of different areas within the field or garden. Gardens only need to be sampled 6 inches deep. It is recommended to take samples from 12 and 24 inches deep in fields, depending on the crop. However, if that is not possible, then those numbers can be estimated as long as there is a sample from the top six inches.

MSU Extension offers many resources on soils. We have a soil probe you can check out, guides on soil sampling and can even send in your sample for you. For more information, you can reach the MSU Extension Office in Broadwater County at 406-266-9242 or allison.kosto@montana.edu.



Billings Clinic Broadwater

 MAYO CLINIC
CARE NETWORK
Member

November is Lung Cancer Awareness Month.

It is a time to stand with survivors, remember loved ones, and take action for a healthier future. Schedule your lung cancer screening today, it could save your life.

For more information or to schedule a screening appointment, call **(406) 266-3186**.

110 North Oak Street, Townsend, MT
billingsclinic.com/broadwater





Graymont's mission is to deliver essential calcium-based solutions to meet the world's changing needs.

Graymont invites applications for the 2025 community-focused Carbon Reduction Fund

We are proud to announce that we are accepting applications for the Graymont Carbon Reduction Fund , an innovative, grass-roots initiative designed to support the development of carbon-reduction initiatives in the communities across the globe that we call home.

The fund’s role is to support projects focused on:

- Protecting the environment by the responsible use of resources
- Reducing our carbon footprint through increased energy efficiency
- Developing and maintaining natural, biological ‘carbon sinks’ such as agricultural land, forests or peat bogs that act as a natural offset for carbon

If you have a project idea that relates to any of these topics, the GCRF is looking for you!

For additional information, please contact Steve Bugni, sbugni@graymont.com, 406-521-6003

Applications are due by **November 28, 2025**

GRAYMONT
carbon reduction fund
PARTNERING WITH OUR COMMUNITIES

Subscribe To MT 43 News and save!

	1Yr	2Yr	3Yr
Print (In-Region*):	\$69	\$108	\$155
Print (In-State):	\$89	\$145	\$200
Print (In USA):	\$119	\$198	\$275
Print (International):	\$145	\$245	\$340
Print Snowbird**:	\$94	\$158	\$225
Email-ONLY (PDF):	\$50	\$74	\$100

**NEW
RATES**

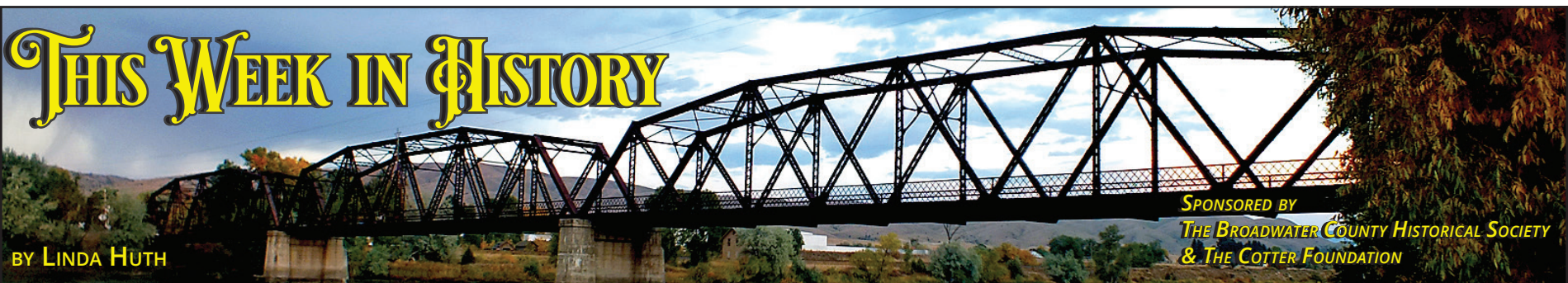
Mail payment or deliver to 408 Broadway, Townsend MT 59644. You can also call with a credit card 406-266-0086, or visit www.MT43News.com

**In Region includes all Broadwater County, Helena, East Helena, Montana City, Clancy, Jefferson City, White Sulfer Springs and Three Forks*

***Snowbird rate includes two address changes per year. Gift subscriptions are also available!*

All print editions include option to receive PDF email.





November 13

1902

Local News

Con Mannix and family of Canton are comfortably domiciled at the courthouse building for the winter.

Winston Homestead No. 771, American Yeoman will give a grand ball on the 26th of the present month and all lovers of the art are cordially invited to be present.

Attorney Geo. Cowan and Ed Ryan of Boulder were in town Monday on business connected with legal claims. They departed for Boulder on the evening of the same day.

J.P. Sanders is located in town with a full fledged photographing outfit. He has rented the blue house formerly owned and occupied by Joe Hemmerl, at which place his tent is pitched for taking your photos.

J.H. Deadmond is engaged in building a warehouse for J.W. Henton on Oak Street just east of the M.E. church. Mr. Henton owns two lots in that locality and will eventually use the warehouse for a barn.

M. Gurnett and family have removed from the ranch to town for the winter.

Thos. Cotter has removed his family from Canton to Townsend for the winter.

Mrs. Van Voast will give Opals away. Call and get one.

1941

Much New Building is in Progress in City and Rural Districts

A new business building is going up this week. Dave Langevin, having broke ground for a modern barber shop the latter part of the week, and by now framework for the walls are up, the excavation and foundation are completed. Carl Hov is engineering the building. His site is on a lot between the Wilson Dress shop and Connors Mortuary, one door from the location of his present shop.

Other buildings going on at the present time include the finishing of the service station and shop on North Front Street. The dwellings are three-room modern houses made from native peeled and treated logs with natural grooved knotty pine interior finish. The same treatment is carried out in their modern service station and blacksmith shop and later they plan to erect some tourist cabins with the same design.

Mrs. M. Hench is having an addition made on her home in the north end of town. Edgar Dawson

is having a milk house and barn constructed on his ranch east of town. A.G Guffey is the contractor for the Dawson improvements. At the Mannix ranch near Canton, now owned by Ed Kane of Helena, there is work well underway on a very fine and modern country home. Hustad Bros. of Helena have the contract for that building. Walter Clark is improving his ranch dwelling near Toston and there are many other minor building improvements underway in and out of Townsend at the present time.

1958

Bulldogs Whip Superior for Western District Title

With a grinding ground attack and devastating passing the Broadwater Bulldogs swept to their second straight Class C eight man state championship with a 26-0 victory over the highly touted and somewhat favored Superior Bobcats.

There was no doubt in the spectators' minds as to who was the finer team as the Bulldogs punched out scores in every period while holding Superior to only one serious threat, which was set up by a Bulldog penalty. This game completed an unbeaten year for Broadwater and marked their 18th consecutive win.

Superior kicked off to Townsend to open the game and held the Bulldogs on downs. The Bulldogs then held Superior and got a lucky break on a fourth down when the whole Bulldog line blocked the Superior punt and then recovered it. From there, Dennis Miller and Brad White, who filled in very well for the injured Jim Van Meter, moved the ball to the Superior twelve yard line, where Pete Carson scored on a quarterback sneak. The kick for extra point was blocked. The Bulldogs had another drive fail in the first period on a fumble, but minutes later in the second quarter carried the drive on out. This touchdown was set up on passes from Carson to Miller, and end Don Lewis. Carson then scored on a roll-out play. Townsend had another threat thwarted just before the half on a fumble. The half ended 12-0. The baffled Superior team called frequent time outs to try to cope with the tenacious defense of the Bulldogs. Pat Delger was particularly rugged as he broke through the Superior line to throw the Superior passer time and again for losses. This, combined with the stalwart play of Norman Bruce and Allan Damuth, held the Superior line plays to minimum yardage. The Bulldogs kicked off to Superior to begin the second half and now the Bobcats tried to sweep the ends. But Lewis and Dwain Lavinder, the Bulldogs' defensive ends, rose to the occasion and kept them

from gaining significant yardage. A pass interception by Miller started the Bulldogs toward their third period score. This, combined with a beautiful run by White and then later a pass to Van Meter, set the stage for Miller's crash to pay dirt. Miller also swept the end for the extra point. This made the score 19-0.

The Bulldog line again held Superior's next set of offensive plays as the final period began. The ball was moved to the Superior ten on a beautiful pass from Carson to White and power plays by Miller. Miller went over for the score and then ran the extra point to make the score 26-0.

Coach Keltz, soon after, cleared his bench, but the Bulldogs were still full of fight. They moved the ball to the one yard line on a pass to Van Meter and runs by Miller and Van Meter. A penalty, however, killed the drive. Superior desperately ran the ball out to the forty yard line, but it was too late as the game ended 26-0.

A great deal of credit for the Bulldogs' successful season goes to the cheerleaders, Linnie Baker, GayAnn Sullivan and Colleen Siebold, as they kept an avid cheering section for the Bulldogs.

1975

East of Townsend News

Mr. and Mrs. LeRoy Bieber and children of Helena spent the weekend with his parents, Mr. and Mrs. Bill Bieber. The Bieber children, Brenda, Penny and Travis were baptized Sunday at the Shepard of the Valley Lutheran Church in Townsend.

Mrs. Monty Hankinson, Brenda and Cody of Dillon spent Tuesday to Friday with their mother and grandmother, Mrs. Ed Neild.

Mr. and Mrs. Gerald Sanderson and boys of Belgrade were dinner guests Saturday at the home of Mr. and Mrs. John Bucy to celebrate Mrs. Sanderson's birthday.

Mr. and Mrs. Bill Flechensar and Heather of Belgrade and Betti Christie of Dillon spent the weekend with Mr. and Mrs. Doug Christie and Sally. Mr. and Mrs. Joel Flynn joined them Sunday and they celebrated the second birthday of Heather.

Mr. and Mrs. Marion Bucy and Mr. and Mrs. Monte Armstrong flew to Seattle, where Monte had a checkup at the hospital there.

Doug Diehl of Helena spent Sunday with his parents, Mr. and Mrs. Wes Diehl and family.

Gerald Olsen, Cathy, Gerry and Randy were at the Shindoll place Sunday gathering up cattle to move over the hill.

Avoid those
A winter blahs
by adding color to
your home!



Paint and paint
supplies 10% off
November 17-22!



SEASON OF LIGHTS
Historic
Townsend Hardware
204 BROADWAY • PROUDLY SERVING TOWNSEND SINCE 1953

Broadwater Democrats Hold Highway Litter Cleanup Event

MT43 News Staff

Several of the Broadwater Democrats group picked up highway garbage on a sunny Saturday, November 8. The group, chaired by Gayle Clifford of Three Forks, gathered sacks, boxes, and pieces of wood from the river bridge to the Townsend city limits.

"It was a good day for a community service project," Clifford said, "It's about caring for and giving back to our community in a visual way."

The group is one of many Broadwater County organizations that gather highway litter, including Townsend Rotary and Graymont Western Lime Plant.

The group has applied for an Adopt-A-Highway section of Highway 287. The program, administered by the Montana Department of Transportation, allows groups to clean designated areas of Montana's highways. MDOT provides day-glow vests and plastic sacks for groups to use. Caution signs are also provided to advise drivers of passing cars that workers are active in the area.

To apply for an Adopt A Highway designation, a group can call the Bozeman MDOT office at (406) 556-4700.



Teresa Patterson, Dawn Langlinois and Gayle Clifford load bags of garbage near Indian Campground after a morning picking up highway litter.
Nancy Marks, MT43 News Photographer