



**Broadwater County History on One Website—p. 5**



**Luci goes to Florida: National Volleyball —p. 6**



**Moo-tilda is on the loose!—p. 2**

## CHAIRMAN PREPARES FOR RODEO PARADE



Photo from 2021 Rodeo Parade courtesy Kylie Howard



Nancy Marks  
MT 43 News

is *Country Pride—County Wide*. Plantenberg and Mistek were chosen as Marshals because of their extensive community service in Broadwater County. The parade begins at noon on August 7 and travels down Broadway beginning at Pine Street.

According to Toombs, the parade entries are separated into seven categories which include cowboys and costume riders, drill teams, antique autos, tractors and machines, commercial floats, animal-drawn teams, buggies and carts, organizations, and walking and riding individuals.

Entries should register at **RODEO, 4**

## COUNTY COMMISSIONERS VOTE YES ON HORSE CREEK CREEK SUBDIVISION

Nancy Marks  
MT 43 News

Broadwater County Commissioners voted Monday to okay the development of Horse Creek Hills Major Subdivision on Lower Confederate Road, east of Canyon Ferry Lake, despite repeated concerns expressed by nearby landowners.

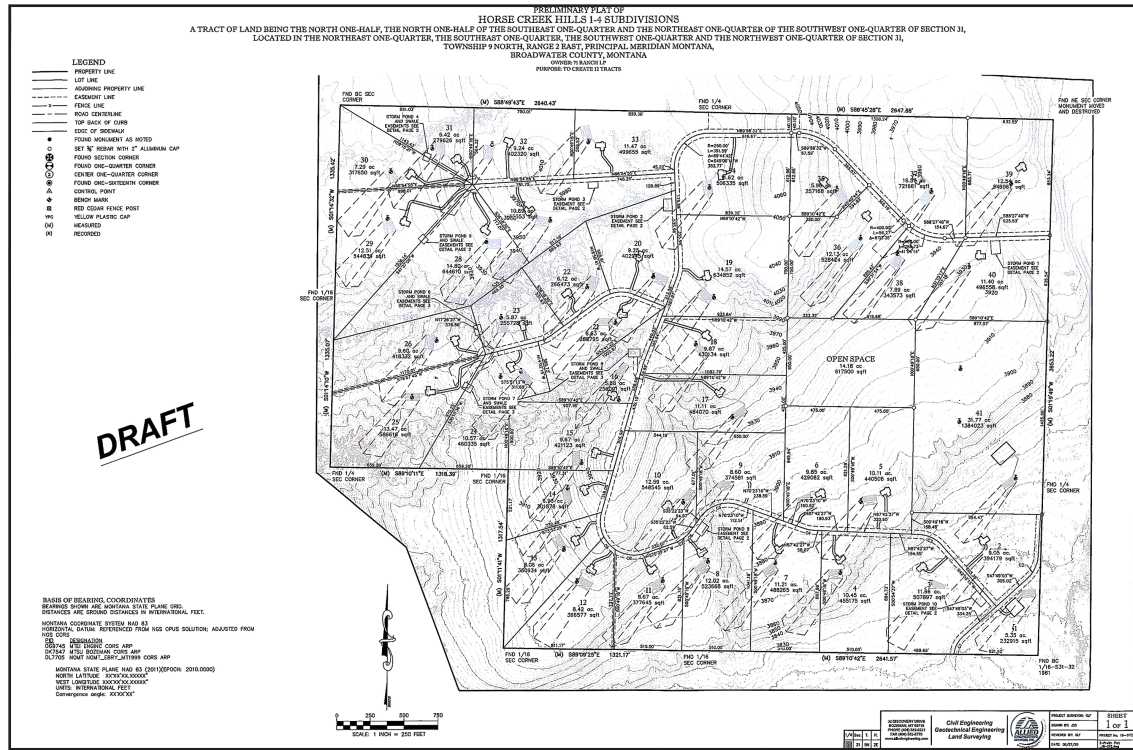
After a grueling three-hour session, Commission Chair

Darrel Folkvord commented, “We voted to approve the subdivision with conditions. The reality is that is what the process is about. It is a difficult job and a difficult decision. In the end, the commissioners are tasked with that decision.” He thanked all the organizations, landowners, agencies and officials who worked on the project.

Allied Engineering of Bozeman, agent for landowner 71

Ranch LP, applied for approval in August 2020. The 442-acre subdivision is to be developed in four phases over a period of unspecified years to include 39 residential lots and two commercial lots. The property borders 260 yards from Canyon Ferry Lake and is 18.5 miles northeast of Townsend.

71 Ranch LP, is owned by the Galt family of Martinsdale, See **HORSECREEK, 5**



## ROTARY'S SLICE OF SUMMER JULY 21!



Patrick Plantenberg  
Rotary International

that run from 5–8 p.m. Rotary is paying for free youth swimming from 1–4 and 6–8 p.m.

Other youth activities will include a free bouncy room, face painting or tattoos, games, etc. Family activities include free musical entertainment and reasonably priced food and drinks which will be served starting mid-afternoon until 8 p.m.

Music begins at 5 p.m. and goes to 8 p.m.

The band on July 21 will be 2nd Wind featuring Gary Frigo (guitar) & Joel Selzer (harmonica) performing Acoustic Americana & Contemporary Music and Electric Rock & Roll Dance

Music throughout the decades. Ashley Chante Stevens with her amazing vocals will be singing for you.

Slice of Summer started when Broadwater County High School students mentioned in interviews for Rotary scholarships that Townsend needed some fun events for families, similar to the Alive at Five events in Helena.

If you have any displays, events, or activities you would like to show off at Slice of Summer please let Rotary know. Rotary needs some volunteers to help pull off this great family event. If you can help or if you have any questions, please call

See **ROTARY, 4**



MT 43 News, Inc.'s Board of Directors, from Left: Vic Samples, Nancy Marks, Jeff Ross, Rachael Elliott-Brug, JB Howick

## WELCOME TO MT 43 NEWS

Nancy Marks  
Secretary, MT 43 News

In the spring of 1970, the Townsend Star was for sale. My newlywed husband and I gave some thought to buying it. He was just home from Army service in the Vietnam war. We were both University of Montana Journalism School graduates

with reporting and business experience. It seemed like a good fit. As it turned out, we moved to Butte, his hometown, where he worked for the Montana Standard, and I pursued other interests.

Fast forward 52 years. An opportunity to buy the Townsend paper presented itself. That See **MT 43 News, 10**



**WE'RE BACK, PEOPLE!  
AND IT'S TIME TO FIX A FEW THINGS...  
WITH POWER TOOLS...**

**Customer Appreciation Days August 4-6**  
**Historic Townsend Hardware**

**Local Postal Customer**

PRST STD  
ECRWSS  
U.S. POSTAGE  
PAID  
EDDM Retail

401 BROADWAY STREET  
TOWNSEND, MT 59644-2323  
MT 43 NEWS, INC.

**YOU DON'T NEED TO KNOW SOMEONE FAMOUS TO GET GREAT ADVERTISING! SIGN-UP WITH MT 43 NEWS AND YOUR ADVERTISEMENT COULD BE SEEN BY BILLIONS AND BILLIONS!**

SCAN ME!

# BROADWATER COUNTY 4-H GROWING & THRIVING



**Allison Kosto**  
MSU Broadwater County  
Extension Agent

Did you know the first 4-H meeting in Broadwater County was held in March 1935? One month later, the first 4-H Club was formed in the County and named the 4-H Hustlers. Some of the first members included Douglas Christie, Charles Mitchell and Donald Shearer. The club was led by Agricultural Extension Agent Ralph Ward. By May 1935, there were 85 members in nine organized clubs located in Townsend (3), Canton (2), Radersburg, Lombard, Winston and the Whaley School District. In less than two months, 4-H was off to a solid start and continues to be a strong force

in Broadwater County today! 4-H enrollment reached a record high of 146 members right before the COVID-19 pandemic. Today, there are 120 members enrolled in six clubs: Crow Creek Clovers, Old Baldy, Radersburg Rattlers, Rocky Mountain Rough Hands, Toston Blue Ribbon and the Winston Eager Beavers. Two of these clubs are brand new, having formed within the last two years. Due to our growing 4-H program, we desperately need more clubs! The most emergent need is for clubs in the Townsend area. If you are interested in forming a 4-H Club, please contact the Extension Office.

4-H members are currently busy gearing up for the premier event of the year, the County Fair, which takes place August 2-8. This is the highlight of the year for many 4-H members. It is an opportunity for members to showcase what they have learned throughout the year and receive recognition for their efforts.

Many people are familiar with the animals at the Fair, most of which are 4-H projects. However, members also contribute to the indoor exhibits, creating posters,



displays, handcrafted items and more, that are on display in the 4-H Building. These exhibits are the culmination of year-long learning through the 4-H program. Stop by the Fair this year to check out the exhibits!

If you are a regular spectator at the Fair you likely noticed a major change in the last couple of years. The COVID-19 pandemic required the 4-H program to make adjustments in order to hold the 4-H activities at the Fair Grounds in 2020. One of these changes was moving the 4-H Livestock Show and Sale outside underneath a tent. This shift was well received by participants and their families, and by the public, as it made for a more comfortable and cooler venue. Because the 4-H program is growing, we are running out of space in the livestock barn. Moving the show ring outside



4-H members participate in a flag raising ceremony at 4-H Camp 2022

freed up valuable space indoors to allow more room for animals.

Since this change was so well received, the 4-H Livestock Committee has continued to use a tent for the shows and sale even after COVID restrictions were lifted. They also set a goal to build a permanent structure in this location to reduce the labor and annual cost associated with the tent. Jason Noyes, Chairman of the 4-H Livestock

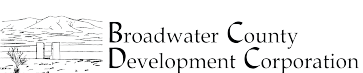
Committee, spearheaded an effort to make this dream a reality. He has worked hard to get approval from the various groups, get cost estimates and secure funding. At the end of June, the Broadwater County Commissioners approved fully funding the project with funds from the Trust Board and Commission. 4-H will still have to do some fund raising for the

See 4-H, 10



## RAFFLE!

The Big Sky Autism Project has a fund raiser going for a \$500 cash prize. Only 100 tickets printed to sell. \$25.00 per ticket. Tickets are at Reading Leaves Books & the Mint (bar side) or contact BigSkyAutismProject@gmail.com. We will draw a winner once all 100 tickets are sold.



## WATCH YOUR MAILBOX!

The Broadwater County Development Corporation along with The Montana Economic Development Association is conducting a survey to gather your comments and thoughts to improve Broadwater County through a Community Review process.

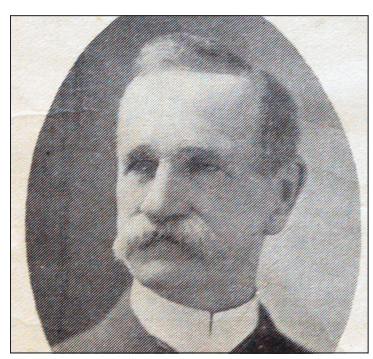
The survey is the first phase of this process and will provide

us with valuable information for the next phase - "The Listening Sessions" in October.

In order for this survey to be successful, we really need responses from all ends of the county, Wheatland to Spokane Creek, Winston to Canton, and everywhere in between.

We hope you will take a few minutes to share your thoughts about life in Broadwater County.

Thank you for your time!



## CANTON CHURCH

The historic Canton Church will continue our Summer Event schedule on July 15, 2022 with a historic presentation on Broadwater County Pioneer and Leader, W.E. Tierney

W.E. Tierney was a Meagher County Commissioner and represented Broadwater County as a State Representative and State Senator. He owned stores in Canton, Cave Gulch, Radersburg,

Hassel and Townsend. He was instrumental in creating the State Bank of Townsend, the Townsend Hotel and the W.E. Tierney department store in Townsend.

The Canton Church will be open at 3:00 p.m. for visitation. The presentation starts at 5:00 p.m.

Admission is FREE!

*Canton Church Restoration, Inc. was formed to restore the church and to ensure its continued preservation. While we do accept donations, all presentations and programs are free of charge so that everyone can enjoy the events.*

*Visit our website at www.Canton-Church.org for more information about our events, the historic Canton Church and the Town of Canton.*

See our ad in this week's MT 43 News for our full schedule and more information.



Subscribe Today!



Haley Potter and "Moo-tilda" at the 2022 6th Grade Conservation Field Trip

## BROADWATER CATTLEWOMEN: MELANIE KIMPTON WEYANT

**Samantha Ferrat**  
Ambassador

For as long as there have been cattle in Broadwater County, there have been Broadwater CattleWomen. They just didn't properly organize until 1958 when they joined together as the Circle B Wranglers, and a few short years later renamed themselves the CowBelles. These women were the precursor to

the group of CattleWomen we are today. The charter members represent a snapshot of Broadwater's cattle ranch history and I've listed them below to give recognition to those women and their families who may have given up on a few warm dinners so their wives could promote the cattle industry, and maybe they had just a little fun while doing so. No matter the name we operate under, our beliefs

See CATTLEWOMEN, 4



*What was the first foreign-language movie to win the Oscar for Best Picture?*

Answer on Page 10

## MT 43 News, Inc.

Published & edited by the Board of Directors

401 Broadway Street  
Townsend MT 59644-2323  
(406) 266-0086

Send stories & tips to news@MT43News.com

Letters and opinions to letters@MT43News.com

Advertising queries to advertisers@MT43News.com

All other correspondence to corporate@MT43News.com

### Deadlines

Business ads: Tuesday 10 a.m.  
Stories & news: Tuesday 12 p.m.  
Letters to the Editor: Monday 5 p.m.

©2022 MT 43 News, Inc. All rights

reserved. The contents of this newspaper may not be reproduced, redistributed or archived, in whole or in part, physically or electronically, without the written permission of MT 43 News, Inc.

First Publication Date:  
July 15, 2022

MT 43 News is published Thursday of each week in Townsend, MT. Its service area is Broadwater County, MT.

### Advertising Policy

MT 43 News, Inc. reserves the right to reject any advertising. Visit our website (MT43News.com) or visit our offices for our rate sheet and image rules.

### Affiliation

Letters to the editor, guest columns,

Op-Ed, editorials and advertising do not necessarily reflect the opinion of MT 43 News, Inc. or any of its executives, employees, or advertisers.

### Letter Policy

MT 43 News, Inc. welcomes letters to the editor on subjects of general community interest.

- Letters must be signed and include the author's legal name, phone number, and address for verification purposes. Anonymous submissions will not be published.
- All accepted letters will appear on the MT43News.com website. Letters will be published in the print edition in the order received as space allows and may not be published the week the letter was submitted.

- MT 43 News embraces our freedom to speak freely and freedom of the press, but we reserve the right to refuse publication of any letter. We will make a reasonable effort to resolve any issues we may have with the submitter.
- Letters may discuss any subject, but are expected to deal with only one subject per-letter and be 300 words or less. We reserve the right to edit letters for content and length. We further reserve the right to require documentation or evidence when discussing the behavior, motivation, or lives of other people.
- Letters to the Editor may not be used as a thank-you, sales pitch, or the type of solicitation. These submissions must apply to paid space.
- Letters should be submitted via

email (letters@MT43News.com) in plain text. Please do not attach any files.

- Headlines and bylines will be determined by the Editor at the editor's sole discretion.

### Political Letters and Editorials

Political candidates are allowed to submit one biographical article during an election year. Additional articles must be paid for or they will be considered only as space allows.

- Any letter that calls into question another person's character will be held until the other party can respond to the allegations. Rebuttals must be submitted within one week of our request. If no rebuttal is received, the letter will not be printed.

### FRESH MUSHROOMS AT THE FARMERS' MARKET

Chris Hettinger  
Farmers' Market Coordinator

MycoLabs of Montana brings fresh LOCAL mushrooms to the Townsend Farmers Market. Founded by Joseph Gill in 2019, MycoLabs of Montana is located in Townsend, Montana. Centrally located in Montana between Helena and Bozeman, MycoLabs grow high-quality choice edible mushrooms. All of their mushrooms are produced in a lab setting indoors and in some experimental outdoor growing tunnels using the highest quality substrates and cultures available on the market. Their mission is to provide the freshest, best quality mushrooms to local farmers markets and local chefs.

Joe started growing mushrooms 6 years ago after being given a mushroom growing kit from his wife's great uncle. Joe had the determination to figure out how to get growing. He was very successful and decided this was something he wanted to pursue.

Joe's strong science background has been helpful in this process. He studied forestry at the University of Montana and learned about mushrooms in college. He has built on that background and is mostly self-taught. He studied the works of many mycologists, including the famous Paul Stamets.

Joe is now growing several varieties of oyster mushrooms: blue oyster, pink oyster, black pearl king oyster, golden oyster and phoenix oyster. The varieties grown are dependent on outside temperatures. Some mushrooms, like the pink oysters, prefer to grow in tropical temperatures. Other varieties, like the blue oysters, thrive in cooler temperatures and can survive below zero.

MycoLabs also grows mushrooms with medicinal properties, such as lions mane, reishi and cordyceps. All of those are also gourmet mushrooms except reishi. Reishi is a conk fungus and it is not gourmet.

In 2019 MycoLabs was able to provide mushrooms to the Townsend Farmers Market and were very happily accepted. The demand was so high they decided to build a large indoor grow room and lab. Their 2022 plan is to keep providing Townsend with fresh mushrooms and to begin expanding the market presence to Helena. The new production facility will allow them much better production. They hope to expand the business into other areas of Central Montana.



Back row, left to right, are children: Joanne Slifka, Idaho Falls, ID, Mark Slifka, Banks, OR, and Monti Menard, Tarpon Springs, FL. Front row, Judy and Franklin Slifka.

### HAPPY 60<sup>TH</sup> ANNIVERSARY!

#### Toston News

Franklin and Judy Slifka celebrated their 60th anniversary on Sunday, July 9, at the Bunk House Bar along with 100 plus of their family and friends.

Franklin and Judy Johnson grew up in Toston and Crow Creek. They both attended the Toston School. The couple was married on October 20, 1962,

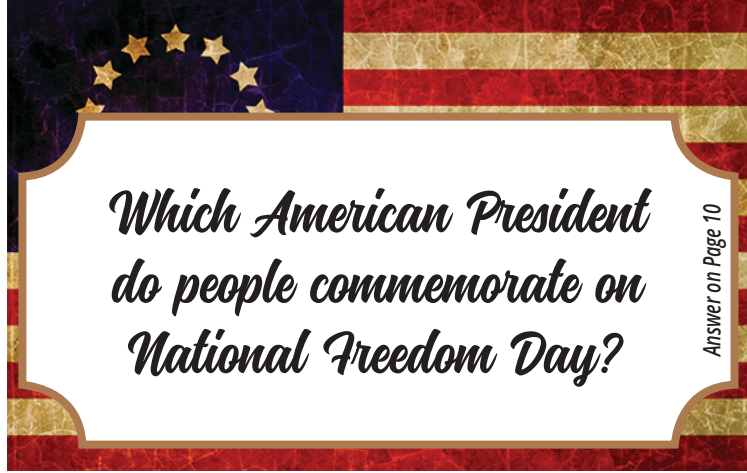
in the Immaculate Conception Catholic Church in Toston. The church is now the chapel at the Canyon Ferry Mansion.

Both Judy and Franklin have served the Toston community and Broadwater County on the Toston Fire Department, various ditch boards and Toston School Board. Franklin also served as Broadwater County Commissioner.



### RIDDLE ME THIS!

A couple of weeks ago we posted a riddle on Facebook: Why did we choose the name "MT 43 News?" The people responded! The correct answer is that Broadwater County is Montana County #43. We choose the name to reflect our desire to represent everyone in the county. Congratulations to Valerie Hornsveldt! She has won her choice of a garden or BBQ gift basket from Townsend Hardware!



### SHARP SHINNED SKATEPARK

John Hahn

I'm sure many of you have witnessed the construction and completion of the new skatepark in Townsend. 4500 square feet of beautifully sculpted concrete laid down by the artisans of the Evergreen Skateparks Construction Company.

Billy is the owner of Evergreen Skatepark Construction and skatepark designer aficionado. Catherine Coulon, Billy's wife is the "take care of everything from the office" gal, and boy is she good at it. The entire crew was great to work with and did their job with integrity and a smile. They love what they do and it showed. They were also the first ones to try it out, making sure it skates great as shown in the drone picture below.

As soon as the last of the skatepark crew left (headed to Deer Lodge to build a 10,000 sq ft skatepark) and the legal signage was up, there were kids maneuvering through the bowls, over the jumps and traversing the humps, all with skateboards, scooters, bikes, roller skates and other contraptions and having a great time. All the feedback I've heard is that it's super fun.

There is still some to do, replacing the irrigation system, laying sod, and installing a permanent skatepark sign but the majority of work is done.

The Parks and Rec board has received approval from the City Council to build a 24' x 27' pavilion in the Northwest

corner of Holloway Park, just north of the skatepark. They have also been approved for funding from the Broadwater County Trust Board (BCTB). Construction will begin sometime this summer or fall. Picnic tables are also included in the budget for the pavilion as is the vaulted toilet, also funded by the Parks and Rec and BCTB. These are three nice additions to the park,

STOKE is planning on a big celebration to officially open the skatepark on August 13th. We are waiting till August as Jeff Ament, who contributed \$50,000 to the skatepark, is on a European tour with his band Pearl Jam until the end of July. Jeff is anxious to come and share our celebration of the opening. Other officials will be here, such as Chris Bacon with the Montana Skatepark Association, another \$50,000 contributor. Carla Amundson will also be donating funds to the skatepark as she and her group of kids started working on this over 20 years ago. She has kept these funds all these years in anticipation of this event. She is one happy camper.

Other people and organizations who have helped or supported this project include STOKE, The City Council and Mayor Mike Evans, the Broadwater County Trust Board and the county commissioners, Tim Rausser, City Foreman, Lee Lewis,

See SKATEPARK, 10



Sharp Shinned Skatepark installation staff have fun testing the fruit of their labors!

Announcing!!



Performances will be on  
**August 12, 13 and 14th, 2022!**

BroadwaterCommunityTheater@gmail.com  
or 406.916.8009 Carla Amundson  
406.475.4016 LaRinda Spencer





**Broadwater Community Theater is underwritten by the Fun For Life Program, a Broadwater County nonprofit organization dedicated to encouraging K through 8th grade students to apply for scholarships in theater, art, music and foreign language.**

**Broadwater Community Theater wishes to congratulate**  
**MT43News!**  
**We wish you the best!**



MFU chief of staff Matt Rains giving an update on the Montana Premium Processing Cooperative in Havre during the June Missouri Headwaters local gathering held in Bozeman.

## WHAT CAN THE MONTANA FARMERS UNION DO FOR YOU?

Samantha Ferrat

Montana Farmers Union has fostered a team of ambassadors to cultivate community by bringing members together to share ideas and needs of their respective communities. Four ambassadors and our membership director make up the ambassador team. Ambassadors live in Sanders, Liberty, Broadwater and Rosebud counties, and their membership areas include surrounding counties.

Ambassadors work within the framework of Montana Farmers Union – a grassroots, non-profit organization dedicated to preserving the agricultural way of life. Our membership is

made up of folks who support rural communities and family farms and ranches. We believe that no farmer or rancher should stand alone, and we are fighting for the issues that will preserve agriculture and rural communities for the next generation. MFU is founded upon three pillars: Cooperation, Education, and Legislation.

Legislative priorities are guided by our policies, and policy is decided by our members.

Since 1993 our education programs have provided Montana youth with an understanding of the cooperative business structure and how to work cooperatively. Plus, our innovative programs give awareness of

agricultural issues and issues facing food production and consumption. In addition, our Arrowpeak summer camp in the Highwood Mountains is focused on building leadership, AG education and of course, fun! MFU offers financial assistance to individuals and youth organizations, such as 4-H and FFA, through grant opportunities and scholarships.

Another MFU mission is to develop Montana Producer Co-Ops that are owned and democratically controlled by their members, not by investors. Cooperatives provide rural communities with economic security. Co-ops create jobs, income and opportunities while setting the bar high for other types of businesses. Being owned largely by people who live and work in the communities they serve gives cooperatives a different perspective.

The first Missouri Headwaters area event was held in June at the GranTree Inn, Bozeman. Members gathered for refreshments, MFU updates and an interactive ideas share exercise. We are working on a plan for the next Missouri Headwaters regional membership gathering to be held in Helena in late summer. Stay tuned for

more details!

Join MFU's growing community of folks who support agriculture and rural communities. Visit our website for more information at [www.montanafarmersunion.com](http://www.montanafarmersunion.com) or contact one of the members of the ambassador team.

Samantha Ferrat, Broadwater/Missouri Headwaters area [sferat@montanafarmersunion.com](mailto:sferat@montanafarmersunion.com)

Carissa McNamara, Sanders/Flathead area [cmcnamara@montanafarmersunion.com](mailto:cmcnamara@montanafarmersunion.com)

Gwyneth Givens, Liberty/Highline area [ggivens@montanafarmersunion.com](mailto:ggivens@montanafarmersunion.com)

Eleanor Ferrone, Rosebud/Treasure area [eferrone@montanafarmersunion.com](mailto:eferrone@montanafarmersunion.com)

Rachel Prevost, Membership Director [rprevost@montanafarmersunion.com](mailto:rprevost@montanafarmersunion.com)

### RODEO, from pg 1

Massa Park on Broadway beginning at 10:30 a.m.

Only registered entries will be eligible for plaques and ribbons.

Floats, cars and commercial entries will line up on South Pine Street at Heritage Park. The National Guard, horses, fire trucks, political candidates and large vehicles line up on North Pine.

For questions, please call Kathy Toombs at 406 202 5039.

### ROTARY, from pg 1

Slice of Summer Coordinator Patrick Plantenberg at 431-4615.

### About Rotary

Rotary brings together a global network of volunteer leaders dedicated to tackling the world's most pressing humanitarian challenges.

Rotary connects 1.2 million members of more than 34,000 Rotary clubs in over 200 countries and geographical areas. Their work impacts lives at both the local and international levels, from helping families in need in their own communities to working toward a polio-free world.

For more information, visit <https://www.townsendrotary.org> or <http://rotary.org>.



Being crazy isn't enough

Dr. Seuss

**CATTLEWOMEN**, from page 2 have always been the same and are laid out in our creed:

*Believing that the livestock industry is of basic importance to world existence, We, the American National CattleWomen, dedicate ourselves to support it with our labor and finances, to promote it through information and publicity, to encourage its producers with our understanding and love, to do all in our power to instill in the coming generations the love of the land, of life, the humility and awe before nature, and the hope and faith in the future that is inherent in CattleMen and CattleWomen.*

The events and promotions these wonderful ladies pulled off over 60 years ago, were no small feat. I can say that because we currently try to do half as many things, and it is no easy task. One of my personal favorite events we are a part of is Ag Days with our Elementary School

students. The Ag committee does an amazing job of putting this event together and we are always so happy to be able to contribute by having a station or two. Our Vice President, Sierra Blatter, graciously shares Mrs. Moo, her dairy cow, with the students, and no one has a better time than Mrs. Moo getting snacks all morning long. Samantha Ferrat, our Secretary/Treasurer and Montana CattleWomen District 2 Director, is in her element at Ag days where she gets to combine her love for teaching and her love for cows and always keeps the kids engaged whether she's teaching cattle breeds through Corb Lund songs or showing them how to tag a calf.

Other notable activities for the CattleWomen include making and providing roast beef sandwiches for the 6th-grade Conservation Day Field Trip, raffling off beef at the Townsend Christmas Stroll and presenting

under the tent at the Broadwater County Fair - Friday, August 5th from 3:00-4:30 p.m. Come see us, we will have free Beef Samples! We also offer a scholarship each year to a graduating senior from Broadwater County High School. We are also lucky enough to have had Haley Potter, Montana CattleWomen Beef Education Chair, join our local group recently, and besides a wealth of knowledge and ideas, she brings with her access to some amazing tools. Such as Moo-tilda, the cow model for teaching about vaccine injection sites as well as a 3-D beef carcass model.

Additionally, we are in the process of planning a new and exciting event. We will be looking to host a Broadwater County Farm to Table dinner, with all food (and entertainment) sourced locally from within our county. We are blessed with so many growers and producers and can not wait to showcase Broadwater

County in our 2023 event.

We are always hoping to do more to promote agriculture within our county. We are open to new ideas and would love to have more people join our ranks. But if the time is not freely available, a membership or Business membership goes a long way to helping us continue our endeavors. We'd love to hear your ideas and comments and can be reached at [broadwatercattlewomen@gmail.com](mailto:broadwatercattlewomen@gmail.com).

The original Circle B Wrangler Charter members, in alphabetical order, as found in "Our Beef Heritage" a newspaper compiled by Broadwater County Cowbells and published by the Townsend Star in 1976:

Myrtle Biggs, Margaret Booher, Minnie Bruce, Bertha Cobban, Ruby Cox, Minnie Daughy, Lucy Ferrat, Edna Gaab, Mabel Gill, Mary Grandchamp, Zita Gravely, Gertrude Grimm, Dorothy Hahn, Gudrum

Hensley, Ester Holloway, Helen Hudson, Marion Iverson, Geneivene Jacobson, Coral Kimpton, Mildred Kimpton, Geraldine Kimpton, Eleanor Marks, Alma Marks, Wilma Masola, Elizabeth McArthur, Irma Meyer, Joye Meyers, Ester Michel, Mary Mitchel, Mildred Neild, Geraldine Parker, Arlene Plymale, Eva Plymale, Lois Plymale, Winifred Prescott, Susan Ragen, Viola Ragen, Kay Ragen, Marba Stanfill, Marie Sullivan, Alida Swartz, Dorothy Jean Wallace, Pauline Webb, Joyce Whaley, LaRae Williams, and Thilda Williams.



Samantha Ferrat at 2021 Ag Days

## 6th Annual Broadwater County-Wide Yard Sale—July 23, 2022



If you are considering having a Garage/Yard Sale this year please consider having the sale during the 6th Annual Broadwater County—Wide Yard Sale event.

There will also be a flea market area on Front Street near the Copy Cup. There is no fee set up at the flea market.

We will do all the advertising in Broadwater County and in surrounding counties; we will create a map of the yard sales that day; **YOU** will keep all the profits.

**There is no fee to be included in the County-Wide Yard Sale.**



Maps for the yard sale can be downloaded from the Missouri Valley Marketing website: <https://missourivalleymarketing.org>

The maps will continue to be updated online right up to the day of the County-Wide Yard Sale as new sites come in. Printed maps will be available by July 20 at the Reading Leaves Bookstore (401 Broadway) in Townsend. Printed maps will also be available at the flea market site on Front Street adjacent to the Copy Cup.

WATCH FOR YOUR **BUILDING A BETTER BROADWATER** SURVEY COMING BY MAIL TO YOU BY MID JULY



BCDC (Broadwater County Development Corporation) along with MEDA (Montana Economic Development Association) is conducting a survey to gather your comments and thoughts to improve Broadwater County through a Community Review process. The survey is the first phase of this process and will provide us with valuable information for the next phase - "The Listening Sessions" in October.

In order for this survey to be successful, we really need responses from all ends of the county, Wheatland to Spokane Creek, Winston to Canton, and everywhere in between. We hope you will take a few minutes to share your thoughts about life in Broadwater County.

Thank you for your time!



Always be on the lookout for the presence of wonder

E.B. White

# THIS WEEK IN HISTORY

BY LINDA HUTH

SPONSORED BY  
THE BROADWATER COUNTY HISTORICAL SOCIETY  
& THE COTTER FOUNDATION

## July 14, 1938

**Harry Anders Opens Food Store**  
Getting in on the ground floor to service the people of Toston and vicinity under the anticipated rush of building the new dam, Harry Anders has opened a store in the old bank building to be known as "Harry's Food Shop". Mr. Anders, son of Mr. and Mrs. L.J. Anders of the Townsend Cash and Carry grocery, is operating alone at the present time having officially opened for business yesterday.

### Townsend Briefs

Mrs. George Zimmerman is expected to return to Townsend today from the Indian hospital, Browning, where she has been in attendance at the bedside of her son, Joseph, who is recovering from an attack of sleeping sickness. Joe will be removed to the CCC camp infirmary to remain under the care and observation of government physicians.

Mr. and Mrs. Ray Ward took their two little daughters to Yellowstone Park Sunday to see the bears. They were accompanied by Mrs. T.N. Averill, the party making a complete tour of the loop.

Chas. Shaw and F.L. Hollaway are installing a water system at the Hooks camp on Deep Creek this week. A driven well will provide water to be electrically forced to high tank levels and thereby provide a

forced system of hot and cold water for the kitchen and a shower bath facility.

Mr. and Mrs. Guy Keene of Lingshire were Townsend visitors Tuesday and Wednesday.

Dr. Paul M. Golley of Missoula stopped overnight in Townsend Monday, guest of the Rev. and Mrs. A.O. France. While here, the doctor, formerly of Townsend, visited the new hospital and called on a number of friends.

## 1949

### Crow Creek News

Hob Lorentz of Kirkland, Wash., has been here for the past week attending to business matters. He has been a house guest at the W.K. Parker ranch.

The Crow Creek Schoolhouse and all buildings have recently been re-shingled. We understand they will also receive a new coat of paint and other repairs will be made before school starts in September.

Mr. and Mrs. Woodrow Hensley are hosts this week to Mrs. Hensley's father P.L. Comerford of Cleveland, Ohio.

Other building going on in the valley includes three granaries, one each on the Nelson Ranch, the Miller Ranch and the Hensley Ranch, recently purchased from the Turman Estate and a smaller granary on the Frank Slifka Ranch. Crops in the area are unusually good,

both the dryland and the irrigated land. Haying is in full swing and much progress has been made despite the frequent rains.

Mrs. Chester Nelson was agreeably surprised on Wednesday afternoon when her neighbors, Mrs. Woodrow Hensley, Mrs. Don Scoffield, Mrs. Chester Scoffield and Mrs. Orrin Harris dropped in for an afternoon of bridge.

Mr. and Mrs. Ed Conrad and Mr. and Mrs. Albert Kimpton recently enjoyed a three-day camping trip. They made the trip to the Boomer Ranch on South Crow Creek by car and pack-horsed on to Crow Creek Falls and the Tizer Lakes. They reported a wonderful time.

## 1966

### Local News

Mrs. Edwin Benson of Denver, Colo., is visiting with Mrs. Benson's mother, Mrs. Mabel Williams, and other relatives.

Mr. and Mrs. Don Geil of Portland stopped briefly in Townsend last week and visited Mrs. Marguerite Peterson and Miss Mary Connors. Mrs. Geil is the former Marie Lasby whose parents owned the Rexall Drug at one time.

Pfc. Cecil Hunsaker flew to Seattle Saturday after spending two weeks here with his parents, Mr. & Mrs. E.L. Hunsaker, and the rest of his family. He will sail on the U.S.S. General

Walter to Vietnam via Hawaii and Okinawa. Cecil has been in the Army a year and is in Communications.

Mr. and Mrs. Jim Vick, Nancy and Susan have returned from a two weeks trip to St. Paul and Duluth, Minn. While in the twin cities, the family enjoyed a couple of ball games. They visited Jim's brother and wife, Mr. and Mrs. David Vick and son.

Mrs. Joy I. Nash of Bellevue, Wash. and Mrs. Van Sheriff of Canyon Ferry visited briefly in town Wednesday en route to the Nash cabin in Bozeman for a few days.

Mrs. Pearl Barraugh will leave Thursday for Emigrant and Livingston for a few days visit with relatives. Miss Vanga Wright will accompany her.

Misses Gloria Fryhling and Sherry Beatty spent the long weekend here with Gloria's parents, Mr. and Mrs. Earl Fryhling. Both girls are attending the summer session at the university in Missoula.

## 1977

### Caught a Big One

Ernest Cowell, using a night crawler, caught a big one last Thursday when he landed a carp that he estimated weighed at least 35 pounds. Fishing just below the boat dock on the Missouri River, down from the bridge was where he made the catch.

## BROADWATER COUNTY HISTORY ON ONE WEBSITE

Victor Sample  
MT 43 News

The Broadwater County Museum, Radersburg Historical Preservation and Preserve Broadwater History all share the goal of preserving the history of Broadwater County and of making our county's rich and colorful history available to everyone.

At <https://preservebroadwaterhistory.org> you can find the combined websites of all three organizations. This one website has three distinct sections for the different organizations, but all three are also interconnected to allow information to be accessible throughout the website.

Learn about the authentic buffalo robe on display at the Broadwater County Museum, read about Radersburg being the county seat of Jefferson

County, and learn about the historic Johnson School House located on Hwy 284 at Confederate Gulch.

Read about our mining towns lost to time: Diamond City, Hassel and the colorfully named towns: Hog'em, Beat'em and Cheat'em. The town of Canton swallowed by the creation of Canyon Ferry Lake. Centerville deserted when the Northern Pacific Railroad created Townsend only 1 mile away.

Winston once had a hotel that seated 200 people for meals. Lombard had a popular hotel accessible only by railroad until the first road was constructed in 1930. Toston had 2 newspapers, a bank and a smelter. Learn about the history of these fascinating towns.

Last April 27 Preserve Broadwater History, Radersburg Historical Preservation



Townsend School District's 7th Grade Class visiting the historic Radersburg Cemetery

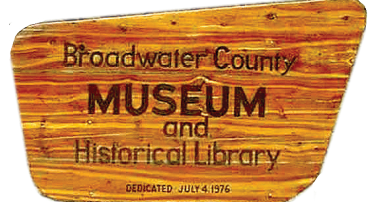
Inc. and the Broadwater County History combined to sponsor and host a history field trip for the Townsend Schools 7th grade class, the class studying Montana history. The students were given a presentation on Radersburg by Linda Huth, Broadwater County Curator, at the historic Radersburg School. They were then fed lunch provided by Preserve Broadwater History. After lunch, the students walked to the Methodist Church and had a short presentation by the Radersburg Historical Preservation on the Church. The trip finished with the students' favorite, a trip to the Radersburg Cemetery.

### Get Involved

Broadwater County Museum, Preserve Broadwater History and Radersburg Historical Preservation Inc. are non-profit organizations and welcome anyone that would like to become involved in learning about and preserving the history of Broadwater County.

Donations to the organizations are fully tax-deductible.

To learn more about getting involved visit our website at <https://preservebroadwaterhistory.org>.



Preserve Broadwater History

Ernest stated that he had been fishing there for about 35 years, but that was the first time he ever caught one that big. He also said that he had a friend with some hungry cats that would probably be enjoying the carp. Ernest also had a smaller carp and several trout in his catch.

### Winston-Claosil News

Tony and Louise Moe and Mr. and Mrs. Herb Bailey of East Helena drove to Great Falls Thursday evening to visit with Wayne Johnson at the Columbus Hospital where he is recovering from injuries sustained in a logging accident recently. They also took Mrs. Johnson out to dinner while there.

Mrs. Dick Hohn and girls, Janet and Anita attended the Rainbow picnic on Confederate Gulch on Sunday.

Houseguests of Neil and Donna Moldenhauer last week were Mr. and Mrs. William Dooley, Mr. and Mrs. Steven Schultz and Mr. and Mrs. Phillip Shultz, all from Wisconsin who had come to attend the wedding of Julie Moldenhauer to Bill Lessberg of Manhattan. The young couple will make their home in Three Forks. Congratulations and best wishes to the young couple.

### HORSECREEK, from pg 1

headed by Errol T. Galt. According to tax records, the corporation owns 40 land parcels in Broadwater County. Much of it was originally accumulated by the late land baron Wellington D. Rankin.

Conditions laid down by the commissioners covered issues related to road access, fire and emergency services, water use, agricultural impacts, schools, county growth policy, wildlife habitat and Broadwater County subdivision regulations.

Two issues that stood out at the meetings were road access and water usage by the residents of the subdivision. In the original application, the developer suggested residents would use both Lower Confederate Road and Lower Duck Creek Road. County road supervisor Josh Obert explained in an earlier meeting that Lower Duck Creek Road should be removed as a condition for an upgrade by the developer because it is not all county road. The Bureau of Reclamation owns part of the road and does not regularly maintain it. He said the road is dangerous in winter due to blind curves and washboarding in the summer. The subdivision developer originally included Lower Duck Creek Road as 16 percent daily use by the subdivision residents.

Carole Plymale, an area resident, expressed her thoughts about removing the use of the road by subdivision residents. "I am sad Lower Duck Creek Road has been left out." She asked if



Broadwater County Museum Curator Linda Huth making a presentation of the history of Radersburg to the Townsend School District's 7th Grade Class

## BROADWATER HIGH SCHOOL STUDENT AT NATIONAL VOLLEYBALL CHAMPIONSHIPS



Nancy Marks  
MT 43 News

Above, left to right: Andi Duma of Manhattan, MT; Luci Horne and Maddie Swanson, Billings, Mt. Right: Luci serves a strong offense!

Broadwater High School junior, Luci Horne, qualified to play at the 49th AAU girls junior National Volleyball Championship finals in Orlando, June 21-29.

She finished with the BHS girls' team in November of 2021, then joined the Capital City Club. Billings Big Sky Club won the championship during

conference play in Billings. During that game, the Big Sky Club coach had watched the 5-foot 2-inch Townsend girl play. She invited Luci to try out and go with the Big Sky Club to Orlando for the finals. Luci won the spot libero, the position which is in the back row of the team.

"The first day of the tournament

was rough," she said, "because I had never played with the Big Sky girls so the chemistry just wasn't there, but by the third day See **VOLLEYBALL**, right



## RECRUITING FOR THE 2022-2023 HEAD START PROGRAM



Ashley Peña-Larsen  
RMDC Head Start Director

The Rocky Mountain Development Council's Head Start Program for children has 16

openings available in Townsend for the 2022-2023 school year. Eight of the opening remain unfilled. The program is free for children ages 3-5. The program operates six hours a day, five days a week, most weeks. Meals are provided at no cost.

Interested parents or guardians should contact Ashley Peña-Larsen at (406) 457-7375.

The future belongs to those who who believe in the beauty of their dreams.  
*Eleanor Roosevelt*

**VOLLEYBALL**, from left of playing we won all three of our games." They placed fourth in their division. She estimated there were 4,400 teams from all over the country, including a team from Puerto Rico.

A highlight of the nine-day trip was going to Universal Studios Resort with her new volleyball friends. After the tournament, she made a second trip to Universal Studios with her family who accompanied her to the tournament.

Luci has played volleyball every year since she was in sixth grade, except during COVID. She is passionate about the sport and also excited about making new friends and working with her teammates. She will finish out her summer working at J Rock Jewelry in Townsend until school and sports start this fall.



L-R: Trey Hoveland, Tizer Sangray, Klause Rauser at the Class B all star game.

## SUMMER FOOTBALL SCHEDULES

Coach Rauh

Little dog camp grades five through 8, 4-6 PM July 11 through the 13th.

High school football camp: July 19 through the 23rd 9 to 11 AM 5 to 7 PM. July 19 p.m. camp only.

Training rules meeting on August 8. First day of practice is August 12.

Welcome to the Pleasuredome was the debut studio album of which band?

Answer on page 12



## Vacation Bible School

July 25-29

9a-12p

4 Years- Enterting 5th Grade

Go off-road for a Monumental adventure through the colorful canyons and sunbaked trails of the southwest. By exploring God's awesomeness, kids form a rock-solid faith for the road ahead.

From more information email [events@trailheadchristianchurch.com](mailto:events@trailheadchristianchurch.com)

Register Here:



# TOWNSEND SCHOOL DISTRICT IS LOOKING FORWARD TO THE UPCOMING SCHOOL YEAR!

Registration is open, and enrollment continues to grow. We are very excited to be in the new school, which will allow for innovative learning and varied experiences for our students. The project is on budget and on time. The Townsend School Board, community, and project leads were just ahead of the curve and able to make challenging decisions promptly, allowing the materials needed to be here for construction on time. The school has appreciated the partnership with Hulteng, A&E Design and Dick Anderson Construction throughout the process. We look forward to having a ribbon-cutting ceremony in August and involving the community in opening the new school.

The district is considering the construction of an additional two classrooms with the remainder of the budget since the project is currently under the expected costs. The addition will help with the unprecedented growth over the last year and future years. If we move forward with the addition now, it will be at a fraction of the cost since the teams are still on site.

We are currently working on filling all positions for next year; please check the website for openings and opportunities with the Bulldog team.

We appreciate the years our dedicated staff has served with the Townsend School District and look forward to welcoming new, highly qualified staff to the team. This year we are also looking forward to a robust adult education program and diverse learning opportunities for community members of varying ages and interests.

The main entrance for the summer is the door near the admin office on Cedar Street and the library is now open. However, please be cautious of the construction in progress and pay attention to signs.

Camps are being held offsite in partnership with STOKE and have been a great success! We want to thank all families and community members for supporting their students and the school last year and in the upcoming school year!



## COMMUNITY CALENDAR

<p><b>July 30</b></p> <p><i>Shakespeare in the Parks</i> "Twelfth Night" 6:00 p.m. @ Heritage Park</p>	<p><b>July 20</b></p> <p><i>BCDC Board Meeting</i> 6:00 p.m. at The Lodge</p>
<p><b>July 19</b></p> <p><i>Townsend City Council</i> 6:00 p.m., 110 Broadway St</p>	<p><b>July 23</b></p> <p><i>County-Wide Yard Sale</i> Maps obtained online at: <a href="http://MissouriValleyMarketing.org">http://MissouriValleyMarketing.org</a></p>

## OUR WALK IN FAITH

- Elkhorn Community Fellowship**, 126 N Cedar St. Townsend. Services: Sunday, 11:00 a.m. Pastor Eric Crusch, 949-0183.
- Faith Baptist Church**, 5 Jack Farm Rd. Townsend. Services: Sunday, Prayer time, 9:30 a.m., Sunday School, 10:00 a.m.; Morning Service, 11:00 a.m. Wednesday: Evening Service, 6:00 p.m., Bible time & prayer, 7:00 p.m. Pastor Mike Wenzel, 266-4219.
- Holy Cross Catholic Church**, 101 S. Walnut St. Townsend. Mass: Wednesday, 9:00 a.m., Thursday, 9:00 a.m., Saturday, 5:00 p.m. Sunday, 8:00 a.m. Adoration: Tuesday, 5:30 p.m., Wednesday, 9:30 a.m. Reconciliation: Saturday, 5:15–5:45 p.m. or by appt. Rel. Ed. classes: Pre-K–5th Grade, Wednesday, 5:00–6:30 p.m. Middle & High School grades, Wednesday, 6:15–8:30 p.m. Adult classes, Thursday, 7:00 p.m. Father Cody Williams, 266-4811 or [office@holycrossmt.org](mailto:office@holycrossmt.org).
- Mountain Valley Church of the Christian and Missionary Alliance (CMA)**, 110 E Street Townsend. Services: Sunday, 10:00 a.m. Kids ministry during Sunday services. Life groups meet during the week. Pastor Eric Krueger, 465-5895. [MountainValleyChurch.org](http://MountainValleyChurch.org). We stream our services on Facebook: [Facebook.com/mountainvalleychurch406](https://www.facebook.com/mountainvalleychurch406). (Was Alliance Bible Church.)
- Radersburg Baptist Church**, 7 Main St. Radersburg. Services: Sunday: Sunday School, 9:45 a.m., Worship, 11:00 a.m. Pastor Richard Summerlin, 410-0458.
- Seventh Day Adventist Church**, 200 N. Cedar St. Townsend. Services: Saturday, 9:30 a.m., Bible study, 10:30 a.m. Pastor John Witcombe, 594-1710 or 431-2810.
- Shepherd of the Valley Lutheran Church ELCA Synod**, 301 N. Cherry St. Townsend. Services: Sunday, 9:30 a.m. Women of the ELCA meet second Tuesday every month at 6:00 PM. Bible Studies meet weekly. Call Pastor Anna Viehland for more information, at 406-272-2352.
- The Church of Jesus Christ of Latter-day Saints**, 916 Broadway St. Townsend. Choir Practice, Sunday, 8:30 a.m. Services: Sunday, 9:30 a.m. Christian education, Sunday, 10:40 a.m. Youth activities Wednesday, 6:30 p.m. Family History Center, Tuesday, 6:00–9:00 p.m. or by appt. (Director Rebecca Mitchell, 980-0270). Bishop Matt Graham, 266-4255.
- Townsend United Methodist Church**, 200 N. Cedar St. Townsend. Services: Sunday, 9:00 a.m. Pastor Daniel Viehland, 266-3390. [TownsendUMC.org](http://TownsendUMC.org).
- Trailhead Christian Fellowship**, 20 Trailhead View Dr. Townsend (5 mi. north of Townsend). Sunday School and Christian Education, Sunday, 9:00 a.m. Services Sunday, 10:00 a.m. Middle School youth group, Wednesday, 6:30–8:00 p.m. Pastor Mark Roelofs, 266-4406 or [info@trailheadchristianchurch.com](mailto:info@trailheadchristianchurch.com), [www.TrailheadChristianChurch.com](http://www.TrailheadChristianChurch.com).



## TOWNSEND'S POPUP PIANO

Mary Duede

You may have noticed a small studio piano that recently appeared in front of Reading Leaves Bookstore in Townsend. It is getting a fresh coat of paint and artistic embellishment by local artist, Beth Robertson Campbell. Campbell has sanded, primed

and is now in the process of adding her personal touch to give the little piano a beautiful new look. Once the piano is finished, anyone can stop by and play.

This project is part of a national community trend that gives new life to pianos destined for the dumpster or a dusty end,

unused in a basement. A bit of cleaning, open-air space and some vibrant paint give the instrument a fresh look and a new opportunity to be used.

Street pianos, aka Pop-up Pianos, stand free to be played by the passerby, tourist, or budding

musician. They provide a source of creativity for the artist and musician, fun for the family and community, and promote a sense of well-being for the player.

Campbell is a 2009 alumna of Broadwater High School. She

answered a "call for artists" ad in the Townsend Classifieds placed by retired high school teacher Mary Duede, who organized the project. "Five or six artists answered the call, but Beth is the one artist who followed

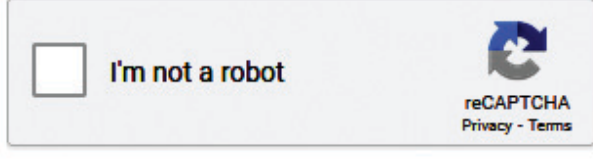
See **PIANO**, 1

# TECH TALK

## I AM NOT A ROBOT: THE DANGER OF PROVING YOU'RE HUMAN



Victor Sample  
Columnist



PC and you will immediately be bombarded with ads.

With some work the Adware can be removed from your pc; but it is very annoying and time consuming.

If you see an "I am not a Robot" box and it does not look like the Google's version in the screen shot above—leave the page immediately.

### Web Bots

The "I am not a Robot" checkbox is a tool that Google provides to website developers to help distinguish between humans and "Web Bots".

A Web Bot is a program that explores websites; some with good intent and some with bad intent. Google uses web bots to examine websites to build its search database and make it both useful and efficient. That is a web bot with good intentions.

Web bots can also examine websites to discover forms. Contact Us forms, information request forms, and account sign-up forms, to name a few. They then use some tricks of the trade against weakly-protected websites to intercept your goal of submitting the form and use

it instead to download software you don't want. I have seen website order forms that have been filled with Web Bot malware to download buckets of Adware.

### Adware

Adware is software designed to bombard you with unwanted ads. Generally speaking, Adware is not trying to destroy your PC or steal your identity; its just designed to deliver ads—generally in a very annoying way.

### The Captcha

The Google "I am not a Robot" tool has a formal name, it's called a *Captcha*. That's an acronym for "Completely Automated Public Turing Test To Tell Computers and Humans Apart." Which is a lengthy way of asking, "are you a bot?" It's designed to help screen out web bots that will automatically fill in any kind of form to access the website's databases. That's a good thing—but such is life that someone figured out a way to use it for advertising.

If you see an "I am not a Robot" box that doesn't look like Google's—run.

# WITH CLEAR SKIES

## WE NEED A CHALLENGE



Jeff Ross  
Columnist

Welcome! In this column I will mostly write about what you and I can hope to see in the night sky with an unaided eye. Sometimes we might want to grab a pair of binoculars to help or maybe even check out the tabletop telescope from the Broadwater School and Community Library but first and foremost it will be about what we can see in the night sky without those aids.

In this first edition, though, I'm going to break that rule and take us back in time to this week in July 1969. I had just barely turned 13 and the United States was poised to

launch our first manned mission to our nearest astronomical neighbor—the Moon.

Launch from Cape Kennedy was on July 16, 1969, at 7:32 am MDT. The three astronauts aboard were atop a Saturn V rocket 363 feet tall and weighing 6.2 million pounds. The first of three stages was fueled with 203,400 gallons of kerosene and 318,000 gallons of liquid oxygen and when ignited generated 7.6 million pounds of thrust.

That's a big rocket yet I remember watching the launch on a black and white TV from our home outside Columbia Falls and it seemed like it took forever for it to clear the launch tower. That forever was probably 30 seconds, tops, and then it was on its way to the Moon.

President Kennedy challenged us to go to the Moon in a speech at Rice University on September 12, 1962, when we barely had the capability to successfully launch a human into orbit. Less than 9 years later Neil Armstrong stepped off the Lunar Module lander onto the surface of the Moon.

See SATURN V, 12

Today I am warning you about some malware that tries to trick you into installing software that will bombard you with ads.

I am sure that most of you have come across the "I am not a Robot" checkbox when filling out any kind of public form—for instance, a "Contact Us" form on a website.

The other day I came across a "I am not a Robot" feature on a form—but it did not look like the usual Google version. It was a fun, comic-looking checkbox. I have run across it several times and my habit is to immediately leave the page before I remember to get a screen shot of it. When I try to go back it doesn't show.

But I do know what it does. The fake "I am not a Robot" test will install Adware on your

# BUSINESS SPOTLIGHT

## LOLO POGI BOUTIQUE

Angela Janacaro

Walk into the Lolo Pogi Boutique, at 406 Broadway and you know you are someplace special. It

is a destination a shopper can luxuriate in and find the perfect something to wear or gift. Lolo Pogi is a business you always wished was in Townsend and now it is.

Owned and operated by MJ and Steve Seiler, Lolo Pogi, is

named after MJ's father who passed away in 2019. In MJ's Filipino heritage, the term, Lolo Pogi, means handsome grandpa; a well-deserved endearment for a man with ten children, over 30 grandchildren and many great-grandchildren.

Both MJ and Steve held corporate jobs in the pharmaceutical industry. Living in the greater Portland-metro area, the two shared the dream of one day returning to live in Steve's home state of Montana. Steve grew up in the Madison Valley. It seemed, however, that their jobs always found a way of delaying the dream, until one day they decided to leave the corporate grind behind. Stated simply, MJ said of the corporate world, "We were tired of it."



MJ Seiler, co-owner of Lolo Pogi

MJ never had any experience owning a small business, but as she and Steve and their two dogs, Gunner and Montana, drove around Oregon to explore small towns she loved the idea of having a clothing boutique with unique items and personalized service. When asked about where she developed her sense of style she states, "I grew up with four sisters and my mom. My mom

is a fashionista." MJ delights in owning her business, "You know, being your own boss is awesome. Steve and I didn't even know how creative we were until we started decorating and renovating the building."

Lolo Pogi officially opened its doors in October 2020 but has operated as an online presence since March of the same year.

See LOLO POGI, 10

# FREE

# MOVIE NIGHT

JULY 27 | 7:30 PM  
HOLLOWAY PARK

**TRAILHEAD CHURCH**

**JULY 23 8A-2P 407 S CHERRY**

**GARAGE SALE**

**CHURCHWIDE SALE**

**FOOD AND DRINKS AVAILABLE**

**BENEFITS BUILDING2SERVE CAMPAIGN**



# Sudoku

Fill in the puzzle so that every row across, every column down and every 9 by 9 box contains all of the numbers 1 to 9.

**Difficulty: Normal**

8				9	4	2		
6	4	1		2	3			
5	9		7	1				
	2	9			8	7	6	
7		4				8	3	
	6	8		3				5
				4			8	9
9	8							4

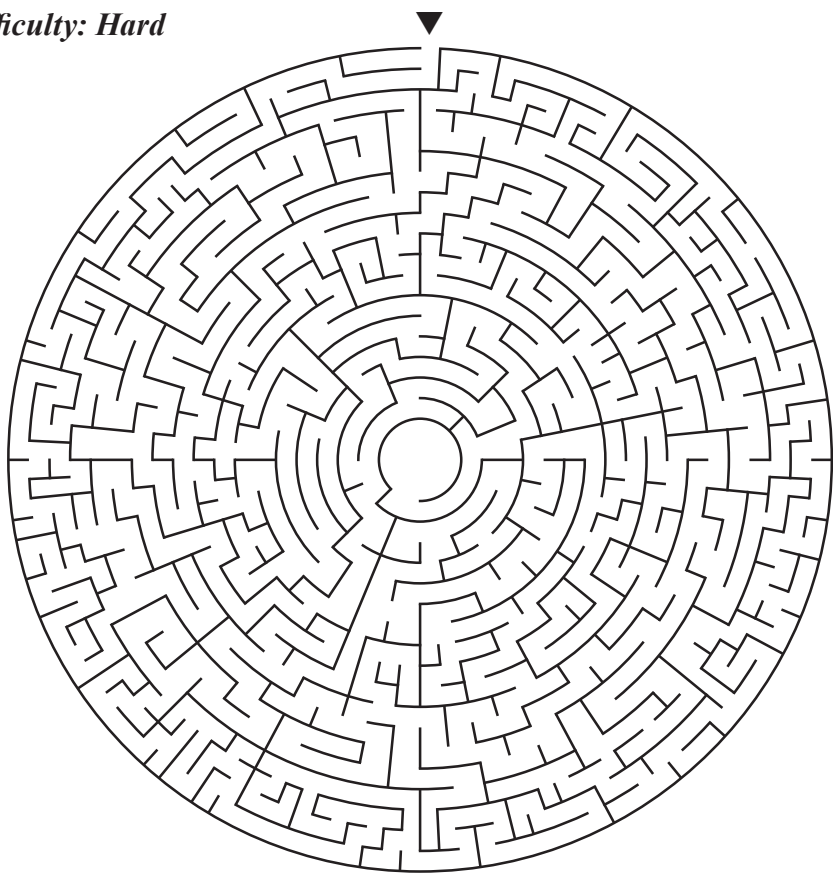
**Difficulty: Hard**

				5				3
5	3	8		2		7		
	2	6		9	3			5
	6				5		7	9
			3					
7						2		
	9							
						3		
			5	3			1	

## Weekly Maze

Start at the top and find your way to the center of this challenging maze!

**Difficulty: Hard**



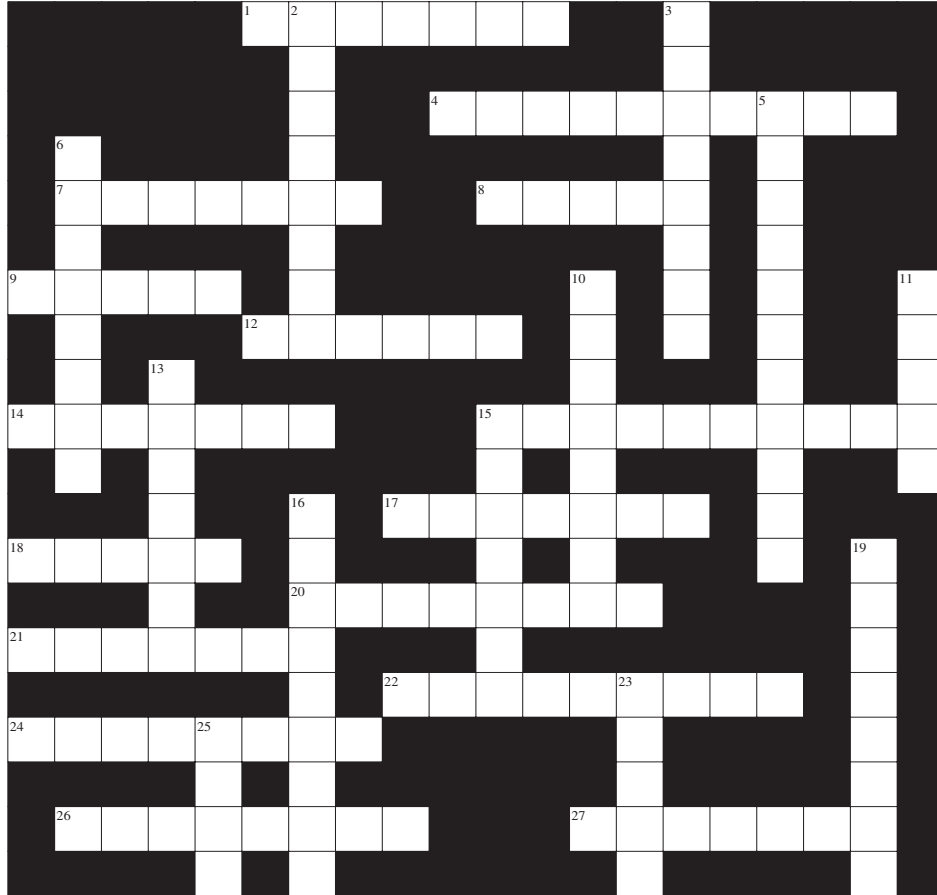
## Cryptogram

Decipher this simple substitution cypher to reveal a pearl of wisdom!

**Hint: H = F.**

SZM PNXM TMEXIR HMMWX SZM TKNR  
 IH IRM KEEIP. SZM ORPNXM HMMWX  
 SZM TKNR IH SPI.

## Montana Mountains



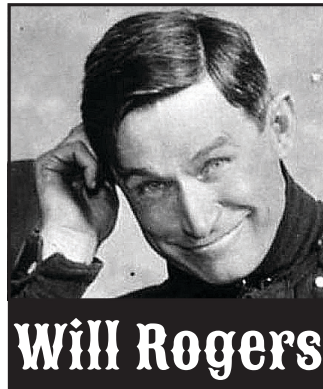
**Across**

- 1. Kitchen storage
- 4. Inside Glacier
- 7. Season trophy
- 8. Great White
- 9. Lunatic
- 12. Flathead lake
- 14. \$5K bill
- 15. Bad tasting carrot
- 17. Surrounds a large tummy
- 18. Meriwether's family
- 20. Big snake
- 21. James Fergus, et al.
- 22. Tops of the mountains
- 24. Elevated timber
- 26. River's big brother

27. Jim's range

**Down**

- 2. A Crow crow
- 3. Not a little lamb
- 5. Smoke the leaves, not the
- 6. Ursine Trotter
- 10. 2nd biggest lake
- 11. Confederate states
- 13. Religious effort
- 15. Sheep
- 16. Ursine Denticle
- 19. Aluminum oxide
- 23. Meriwether's buddy
- 25. Canis lupus



**Will Rogers**

Even if you are on the right track, you'll get run over if you just sit there.

## State Capitals

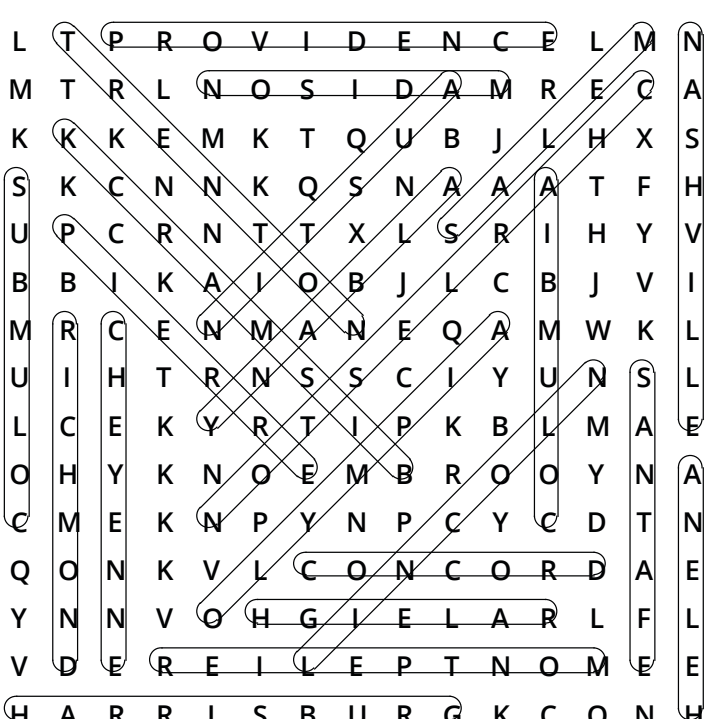
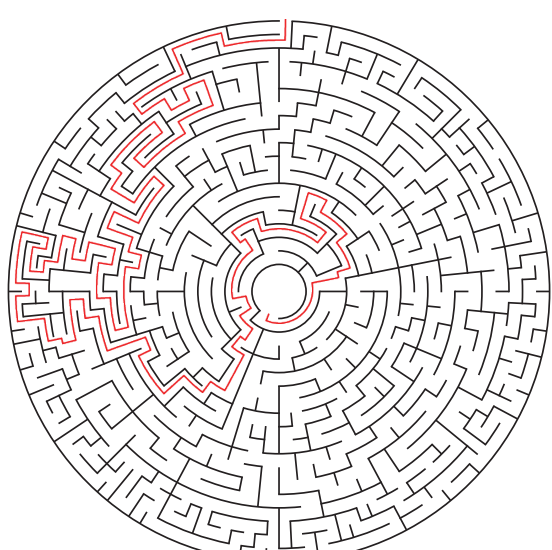
Find the words based on the clues. They run in all directions: forward, backward, up, down, and diagonally. Unlisted clue hint: Montana's state capital is —

L	T	P	R	O	V	I	D	E	N	C	E	L	M	N
M	T	R	L	N	O	S	I	D	A	M	R	E	C	A
K	K	K	E	M	K	T	Q	U	B	J	L	H	X	S
S	K	C	N	N	K	Q	S	N	A	A	A	T	F	H
U	P	C	R	N	T	T	X	L	S	R	I	H	Y	V
B	B	I	K	A	I	O	B	J	L	C	B	J	V	I
M	R	C	E	N	M	A	N	E	Q	A	M	W	K	L
U	I	H	T	R	N	S	S	C	I	Y	U	N	S	L
L	C	E	K	Y	R	T	I	P	K	B	L	M	A	E
O	H	Y	K	N	O	E	M	B	R	O	O	Y	N	A
C	M	E	K	N	P	Y	N	P	C	Y	C	D	T	N
Q	O	N	K	V	L	C	O	N	C	O	R	D	A	E
Y	N	N	V	O	H	G	I	E	L	A	R	L	F	L
V	D	E	R	E	I	L	E	P	T	N	O	M	E	E
H	A	R	R	I	S	B	U	R	G	K	C	Q	N	H

- |                |                |               |
|----------------|----------------|---------------|
| Nebraska       | Ohio           | Texas         |
| New Hampshire  | Oregon         | Vermont       |
| New Jersey     | Pennsylvania   | Virginia      |
| New Mexico     | Rhode Island   | Washington    |
| New York       | South Carolina | West Virginia |
| North Carolina | South Dakota   | Wisconsin     |
| North Dakota   | Tennessee      | Wyoming       |

**CATS KNOW MORE THAN THEY LET ON...**

MOVIE TRIVIA: PARASITE (2019). CRYPTOGRAM SOLUTION: THE WISE PERSON FEELS THE PAIN OF ONE ARROW. THE UNWISE FEELS THE PAIN OF TWO.

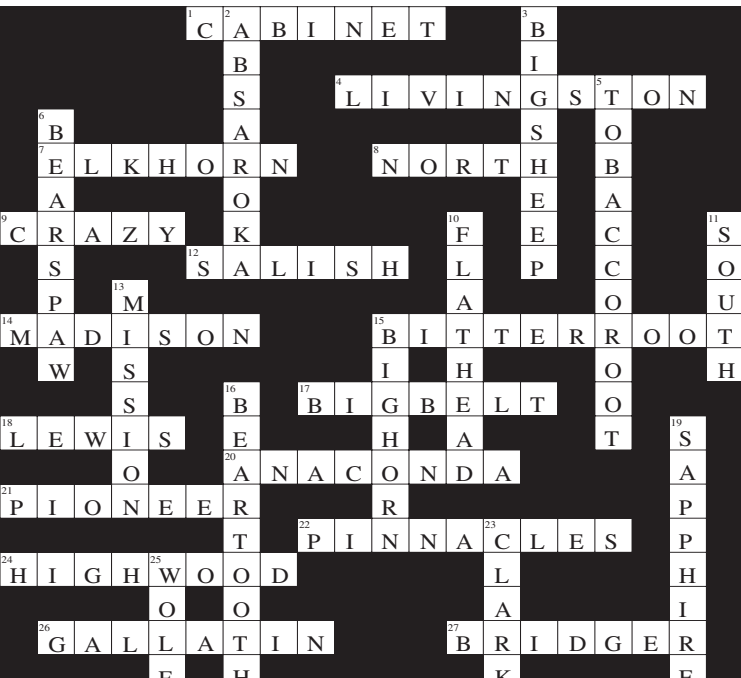


Normal

8	3	7	5	9	4	2	1	6
6	4	1	8	2	3	9	5	7
5	9	2	7	1	6	3	4	8
3	2	9	4	5	8	7	6	1
7	5	4	1	6	9	8	3	2
1	6	8	2	3	7	4	9	5
2	7	5	3	4	1	6	8	9
4	1	6	9	8	2	5	7	3
9	8	3	6	7	5	1	2	4

Hard

9	7	4	8	5	1	6	2	3
5	3	8	4	2	6	7	9	1
1	2	6	7	9	3	4	8	5
8	6	3	2	4	5	1	7	9
2	1	9	3	7	8	5	4	6
7	4	5	6	1	9	2	3	8
3	9	7	1	6	2	8	5	4
4	5	1	9	8	7	3	6	2
6	8	2	5	3	4	9	1	7



**LOLO POGI**, from pg 8  
year. The online store can be found at [www.shoplolo.com](http://www.shoplolo.com) and features some area modeling talent. The store is open Monday–Friday 10–6 and Saturday 10–4. The fashion items available are carefully selected by MJ to be trendy and classic, “I call the ideal customer an avatar and for the most part, the avatar is the 45–65-year-old woman. I also choose clothes that are flexible and can be worn by all age groups, but for the most part, I sell things that are

classic and won’t go out of style next year.”

When asked about the most enjoyable aspect of owning a business in Townsend she cites the people and the small-town friendliness and humility. She hopes to see new businesses in town start up and entice customers to stay in Townsend for shopping, dining and entertainment. One thing is for certain, Lolo Pogi is a positive step in that direction.

**MT 43 News**, from pg 1

didn’t work out. I contacted several of the busiest people in Broadwater County. They were shopkeepers, community activists, farmers and ranchers, and retired folks. Fifteen people showed up for a meeting to talk about starting up a new weekly newspaper. Before many weeks passed, we legally incorporated as MT 43 News.

Welcome, all readers and advertisers. Welcome not to OUR paper but to what we hope will be YOUR paper.

We want it to become a comprehensive and reliable source of news and a voice for community activities and opinions. We want to cover all manner of local events, city and county government, our school, churches, and promote local businesses. Our coverage must be without bias or political agenda.

So, who are we?

Founding members of MT 43 News, Inc., are Rachael Elliott-Brug, Albertina Homann, JB Howick, Linda Huth, Jeff Langlinais, Nancy Marks, Jeff

Ross, and Vic Sample. Board officers are Howick, president; Ross, vice president; Sample, treasurer, and Marks, secretary. All serve without compensation. We also thank local attorney Peter Simon for legal assistance.

Howick is serving as volunteer publisher and editor. To start with, our writers have been unpaid volunteers. They are members of our founding group, people involved in various activities, some of your neighbors and your friends. We are not professional or perfect writers ourselves, so we don’t expect anyone else to be either. As time goes on and business success allows, we intend to hire an editor, a reporter and other staff as needed. As finances allow, we would also like to pay writers for their news and feature offerings. Up to now, we have been financed entirely by donations.

Our office is in the Reading Leaves bookstore at 401 Broadway Street, Townsend. You can leave a phone message at 406-266-0086.

**4-H**, from pg 2

finishing touches but it’s a huge weight off our shoulders! The goal is to have the structure built in time for Fair 2023.

As you can see, 4-H continues to grow and thrive in Broadwater County. Youth must be ages 8 to 18 to enroll as a traditional member. The Cloverbud program is available for youth ages 5 to 8.

The 4-H year begins October 1, which is a great time to get started. We continually seek community members to serve as volunteers in the program. Volunteer positions include club organization leaders, project leaders, committee members and fair judges.

For more information about 4-H, contact MSU Extension in Broadwater County at 406-266-9242 or [broadwater@montana.edu](mailto:broadwater@montana.edu) or stop by my office in the Flynn Building at 416 Broadway (former Opportunity Bank Building).

4-H is the youth development program of the Montana

State University Extension. We look forward to seeing you at the Fair!

**SKATEPARK**, from pg 3

Eric Crush, and Paul Rausser. Thanks go out to Watson Irrigation for donating drainage pipe; Al Bodle donated geotextile fabric for use in the drainage system; Rick Anderson, Lone Mountain Transport, supplied an enormous amount of lime rock gravel; Hahn Ranch donated extra topsoil and installed the drainage area; Capital Concrete supplied the shock-crete and provided a 15% discount for the project; Aaron Christensen and Tri-Rivers Construction contributed scrap lumber for concrete forms; George Jenkins for attempting a skatepark sign; Clint Watson who wanted to help with our sign but ran out of time at the school; Montana Hydraulics who will be making the laser cut sign; Pat Plantenberg and his crew moved small trees that were in the way of the skatepark and helped with landscaping and all other supporters. Sodworks will be providing sod. Adam Six and the Parks and Rec board provided advice and amenities.

There were many excited and anxious kids helping along the way, including Will Lynde and Bastien Grandy. Cheers to Bridger Nunn for coming up with the winning name for the skatepark and all the kids who participated in the name contest. I’m sure there will be many more thank yous given before we are all said and done.

A special thanks to all the kids and young adults who have been patiently waiting until this project came to fruition. This Skatepark is for you!

**What is the only number that has the same number of letters as it’s meaning?**  
Answer on page 12

**VISIT HISTORIC CANTON CHURCH**  
ST. JOSEPH CATHOLIC MISSION CHURCH  
**2022 SUMMER SCHEDULE AND EVENTS**

DATE	VISITING HOURS	GROUP/SPEAKER	EVENT TIME
JUNE 10	3-6 PM	<b>Seldo Kings</b> Acoustic Trio playing folk, rock and country music	5 PM
JUNE 24	3-6 PM	<b>Neal Lewing—Inlaws and Outlaws</b> Award winning singer/songwriter	5 PM
JULY 15	3-6 PM	<b>WE Tierney</b> Broadwater County Pioneer and Leader	5 PM
JULY 29	3-6 PM	<b>John Larsen, Family and Friends</b> Toe tapping music	5 PM
AUGUST 12	3-6 PM	<b>The Ruby Valley Boys and Barb Wire</b> Folk, Country and Gospel music	5 PM
AUGUST 26	3-6 PM	<b>Jim Foster</b> Folk, County, Gospel and Patriotic music	5 PM

Visit our website at <https://canton-church.org>



4-H & FFA Beef Show taking place outside during Fair 2021. This location will eventually have a permanent structure for the 4-H shows and sale. (L) Dylan Kamps, (R) Colton Noyes.

**PIANO**, from pg 7  
 through with vibrant design work," said Duede. The piano is being painted in a style evocative of Scandinavian Folk Art. Beth refers to herself as a block-cut artist, or linocut artist. Some of her work is available on her Etsy site found under BCPrintsArt. With this new project, viewers can get an idea of her talent. Campbell explained, "It's a great opportunity to give back to the community I grew up in."  
 Many people and groups, including Missouri Valley Marketing, Billings Clinic Broadwater and Townsend Rotary have come together to support the pop-up piano project. Billings Clinic Broadwater donated the studio piano. Pam Sample, with Missouri River Marketing, donated a large quantity of paint. Townsend Rotary has offered its support as well.  
 Broadwater Community Mental Health is also supporting the project. The benefits of playing music and appreciation of it are well documented in promoting mental health and well-being. Stress and anxiety are reduced in playing and listening. Rachael Elliott-Brug owner of the bookstore, stated, "I'm thrilled to have Beth's gorgeous artwork out front bringing smiles to the community. This piano will be a way to encourage conversations about mental health issues and maybe inspire people to learn more about them."  
 Townsend Hardware owner, J.B. Howick filled a big need in moving the piano. He made light

work of it all using his forklift to take the piano to its new location. Once the move was complete, Beth's work began in earnest last Thursday evening. She has worked through heat, wind, rain, and dust. Her husband, Chase, and daughter Juniper have been by her side to help and lend support in many ways from sanding, shuttling supplies and food to offering general advice. So far, at least 70 plus hours have gone into designing, planning and painting the piano.

The piano has found a great home at Reading Leaves Book Store. It is well protected by a large overhang and is accessible to all. The touch of whimsy is a bright spot for motorists and pedestrians.

The pop-up piano is a family-friendly addition to the community. It is hoped that residents or visitors in and around Townsend will be inclined to sit down and play.

With this attractive and functional art piece, we hope to foster music appreciation and encourage our community's own emerging artists and musicians as well as nurture the well-being and creativity of others.

A big thank you to all who have helped give this little piano a second chance.



# HEAD START

## CREATING "BARRIER" BUSTERS

### IS YOUR CHILD READY?

**ROCKY MOUNTAIN DEVELOPMENT COUNCIL, INC.**  
Improving lives. Strengthening communities.

**TAKING APPLICATIONS THROUGHOUT THE YEAR!**  
 Call (406)457-7308 for more information  
 200 South Cruse Avenue Helena, MT 59601

**Head Start**  
STRONG FAMILIES. SUCCESSFUL CHILDREN

**Qualifying for Head Start is a SNAP!**  
**If your family is on SNAP & your child is 3 or 4, you qualify for Head Start.**  
**Give your child a Head Start and call**  
**406-457-7308**

**SUBDIVISION**, from pg 5

the road would be closed, and if not, how would the county control the traffic.  
 Residents of the subdivision will access Highway 284 mostly by Lower Confederate Road. The end condition for approval is that the developer pays the county to upgrade the road from the subdivision to Highway 284 in proportion to the subdivision residents' usage. The work would be completed as the four phases of the project take place. Money for the road work would be placed in a county escrow

account so as the project phases in, the road would be upgraded to meet county standards for additional traffic. Actual fund amounts would be calculated on the material and construction prices at the time.

The second major issue before the commission is what impact the new water wells and individual sewer systems will have on the aquifer of the hills and agricultural lands east of the subdivision. The developer set individual annual usage at 10-acre feet. The commercial lots

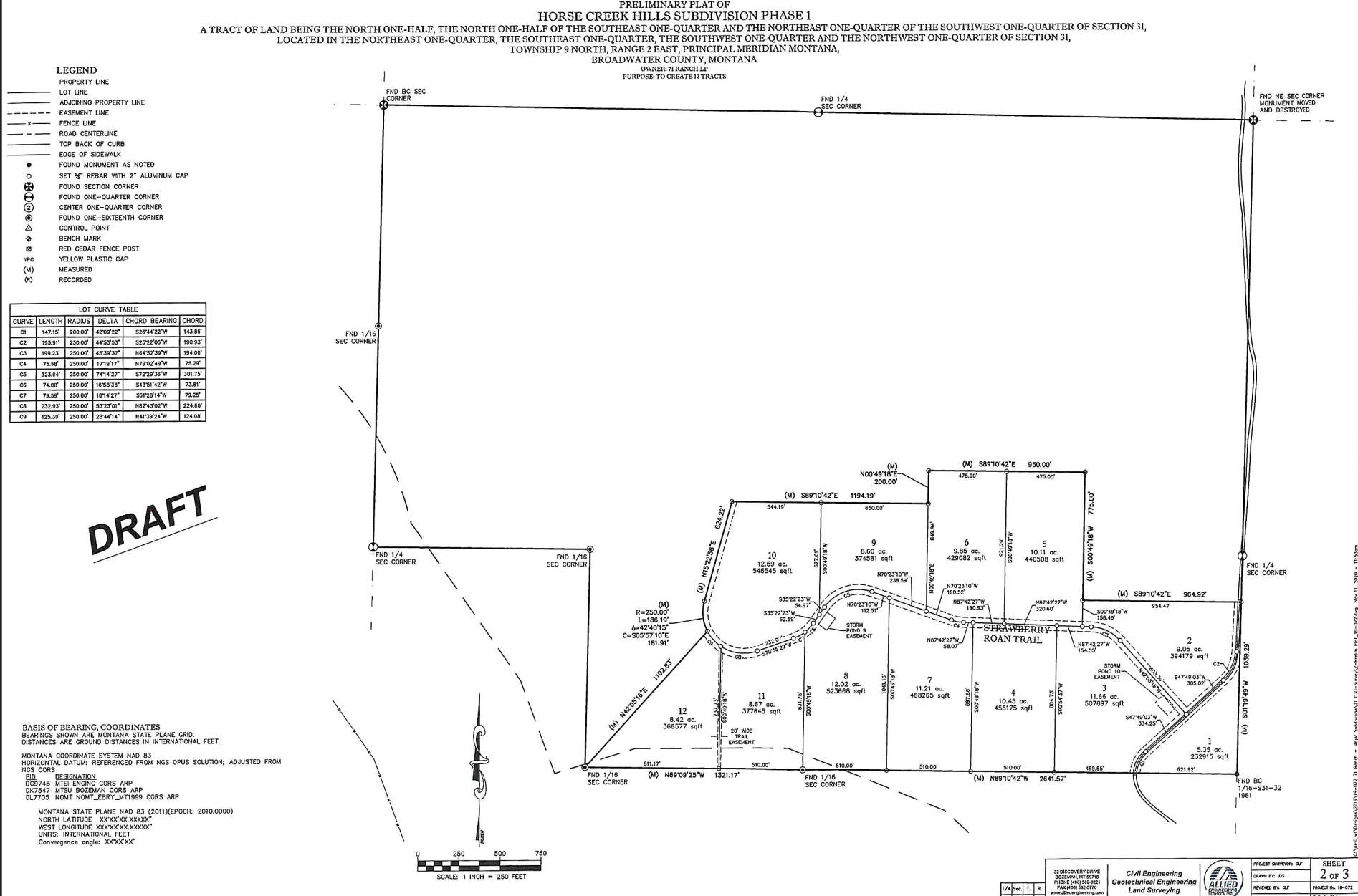
would be allotted 20-acre feet per year. Concerns were raised about how much those wells would draw down the aquifer to the east and how would that be measured. Finally, the developer was tasked to add water meters to each homeowner's well so the data would be available annually.

In order to track the aquifer itself, an approval condition by the commissioners would include a need for a professional study of the hydrology of the aquifer as a baseline.

Landowner and District Conservation employee Denise Thompson referred to Commissioner Mike Delger's point that additional growth to the east of the proposed subdivision would impact the aquifer as well. "All the future growth will have negative effects on the already fragile aquifer," she said.

One landowner who expressed unhappiness with the commission's decision was Bill Waldron, whose property is about three miles from the proposed subdivision. He said

his land has two landing strips used by Army Special Service Force who train military divers in the lake. He said they have C130 planes flying over the subdivision land. He said the first noise complaint coming from subdivision residents will end the important work of the training. "We have to have someplace to train our services to protect our country," he said.



# WE'RE IN GOOD COMPANY!

## SUBSCRIBE TO MT 43 NEWS TODAY!

1Yr 2Yr 3Yr  
 Email-only: \$30 \$54 \$76

Name: \_\_\_\_\_

Address: \_\_\_\_\_

Ph#/Em: \_\_\_\_\_

Print (in-county): \$49 \$88 \$125

Print (in-state): \$69 \$124 \$176

Circle your subscription! Townsend MT 59644 or visit [www.MT43News.com](http://www.MT43News.com)

Mail check or deliver to 401 Broadway St. Ste A,



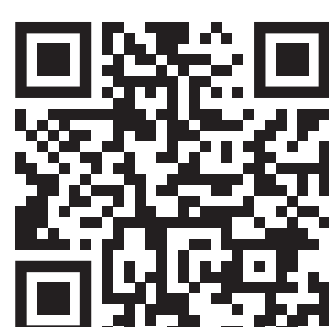
Subscribe Today!

A great many newspapers have served Broadwater County over the years. The Broadwater County Citizen, the Townsend Star, the Townsend Messenger, the Winston Prospector, the Crow Creek Journal and Toston Times, to name a few. We're proud to join that news-gathering and reporting history.

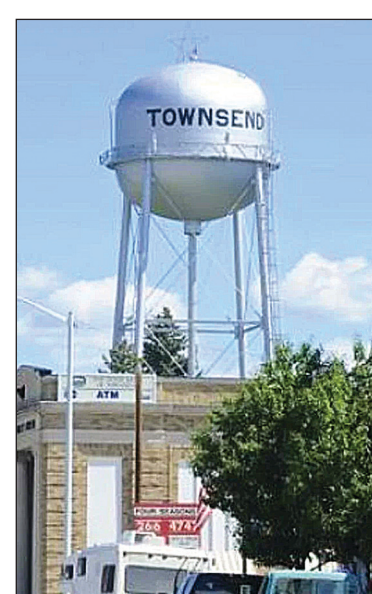
And you can, too! If you're interested in unbiased reporting and the chance to be uplifted as well as informed, then we invite you to subscribe to and advertise in MT 43 News!

On this page you'll find our subscription form and advertising rate sheet. If you have any questions, don't hesitate to call!

And *THANK YOU* for giving us a chance to bring the world to you!



ADVERTISE WITH US!



### ADVERTISING POLICIES

- All advertising must be paid in advance.
- Non-profit organizations receive an additional 20% discount.
- Multi-edition advertisers may change their content per-edition, but must maintain the same ad size in every edition.
- Multi-edition advertisers will retain their location in the newspaper until the first unpaid edition is sent to press.

Base price: \$12/column-inch

### COMMON AD SIZES & COSTS

**Eighth Page**  
 1 column (1.83") x 9.6875" or  
 2 columns (3.83") x 4.8438": \$116.25

**Quarter Page**  
 2 columns (3.83") x 9.6875" or  
 5 columns (9.83") x 3.875": \$232.50

**Half Page**  
 5 columns (9.83") x 7.75": \$465.00

**Full Page**  
 5 columns (9.83") x 15.5": \$930.00

Custom ad sizes are permissible. Ads must be 1, 2, 3, or 5 columns wide. Minimum height is 2". Maximum height is 11" or less, or 15.5".

### COMMON AD FREQUENCY DISCOUNT

4X (one month)	15%
8X (two months)	20%
13X (three months)	30%
26X (six months)	40%
52X (twelve months)	50%

### PREMIUM LOCATIONS

Front page top banner ad:	+15%
Front page other:	+10%
Back page:	+5%

### PROFESSIONALS & SERVICES ADS

Local Professionals (1x2.25"):	\$15
Regional Professionals (1x2.25"):	\$22

### PROFESSIONALS FREQUENCY DISCOUNT

4X (one month)	5%
8X (two months)	10%
13X (three months)	15%
26X (six months)	20%
52X (twelve months)	25%

### SPECIAL ADS & SPONSORSHIPS

- Classifieds:* 25¢/word, 25 word minimum.
- Obituaries:* \$8/photo (1x2.25") + 25¢/word, 25 word minimum.
- Legal (Government):* 15¢/word, 100 word minimum.
- Legal (Private):* 20¢/100 words, 100 word minimum.
- Sponsorships:* +10%, Community Calendar, Comic Page, Church Directory, etc.
- Inserts:* \$120/1,000 inserts. Contact MT 43 News for scheduled print run to determine quantities.

## HOG'EM, BEAT'EM, AND CHEAT'EM

### Vic Sample

From the information in the Broadwater Bygones (available at the Broadwater County Library)

Hog'Em, Beat'Em and Cheat'Em were colorfully named towns in what is now Broadwater County (originally Jefferson County) along the Elkhorn Mountain front.

The first trailblazers in Montana (hunters and trappers) used the site of the warm springs located just west of the Canyon Ferry Mansion as a convenient stopping point. Springville, one of the first named towns in Montana Territory, was created on the spot. By 1866 the first stores and cabins appeared with the first stagecoach coming through Springville in 1869.

Many miners were drawn to the gold discoveries at Last Chance Gulch (Helena) and Diamond City (located up Confederate Gulch on the west side of the valley). As the gold played out at Diamond City, Springville saw a huge influx of miners drifting into the Indian Creek mining district.

Placer claims were filed on by the acre with wholesale gobbling of the land, which gave rise to the classic town titles of Hog'em, Beat'em and Cheat'em. The Helena Herald, June 12, 1867 reported:

This spring, three small but productive placer discoveries were made near Indian Creek and while, not rich, they yielded the exceptional return of \$25 to \$50 per man per day.

So greedy were the miners staking claims around Springville that the area became known as Hog'Em.

Beat'em (or Rob'em as some called it) was on the flats of Indian Creek about one mile south of Hog'em. Beat'em was little more than a tent town that lasted but a short time. Cheat'em, three miles west and south of Hog'em, bordering Indian Creek (near the site of the county landfill dump) lasted the longest of the

3 towns. Cheat'em was where Mr. and Mrs. John Murray had a hotel, store and boarding house (1876-1893) located just before where Townsend's landfill is today. Ruts in the ancient stage road can still be seen where the stage line crossed from Springville over the Limestone hills to Radersburg.

Like most of the early mining towns in Montana, the towns of Hog'Em, Beat'Em and Cheat'Em died as the gold deposits were depleted. If you look hard you can still see old foundations from the buildings in the area – but watch out for the abandoned mine shafts!



**Jay Kitt**

When I asked Ruthie Knowles about her sister Carol Anderson, she was proud to tell me all about her. Carol has been the main cook (chef) at the Townsend Senior Center for the past 32 years. Carol was trained into that position by Doris Hossfeld's mother, Irene Burtch. Carol has held many other positions prior to this including working at the hospital as a cook and also a janitor at the school.

Carol moved here from Helena. She puts out anywhere from 50-70 meals Monday through Friday. Around 35 of those are

delivered to homebound people. Around 15 meals go to Head Start students and teachers and the rest are people who come to the Center to eat in.

Carol is an extremely good cook and takes her job very seriously. Her kitchen is always immaculate.

Meals are \$5 donation for seniors. Come have a delicious meal for this very reasonable fee and meet new and old friends.

COME JOIN A VERY FRIENDLY AND WELCOMING PINOCHLE GROUP AT THE SENIOR CENTER! WE PLAY EVERY WEDNESDAY AND FRIDAY AT 1:00 P.M. PLEASE FEEL FREE TO CALL RICH AT 266-1565 OR JAY AT 210-5753.

**SATURN V, from pg 8**

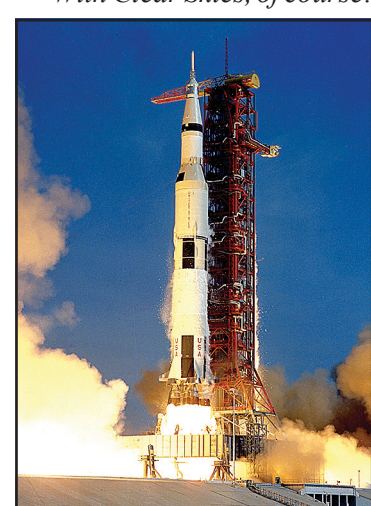
Do we need a similar challenge now? I think so.

Step out into a warm summer night and immerse yourself in the night sky above. The Last Quarter Moon rises around midnight and is directly overhead at dawn. The Big Dipper is its most iconic during summer when the dipper points up almost all night long.

Mercury is currently too close to our Sun to be visible from here. Venus rises at about the end of morning twilight so might not quite be visible in the east. Mars, Jupiter and Saturn all clear the eastern horizon right

around midnight and are visible for the rest of the night—short as that might be in these summer months.

*With Clear Skies, of course!*



Launch of Apollo 11

**Broadwater Blooms**

**SUMMER Gift Sale On NOW!**

**314 BROADWAY ST.**